



# SOFT SOLID SURFACE PLUS



Date: \_\_\_\_\_

Order Number: \_\_\_\_\_

Merchant: \_\_\_\_\_

Consultant: \_\_\_\_\_

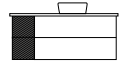
## STEP 1. CABINET CONFIGURATION\*

### SOLD SURFACE VANITY + 300 OPEN SHELVES

Note: Please tick chosen location of shelf module, either left or right. Basin will be offset either left or right depending on chosen location of shelves.



Total Size (includes 300 mm shelves)	
<input type="checkbox"/>	950 (650 mm Drawers + 300 mm Shelves)
<input type="checkbox"/>	1200 (900 mm Drawers + 300 mm Shelves)
<input type="checkbox"/>	1300 (1000 mm Drawers + 300 mm Shelves)
<input type="checkbox"/>	1500 (1200 mm Drawers + 300 mm Shelves)

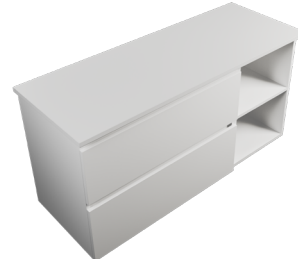


Shelf - left

Shelf - right

### SOLD SURFACE VANITY + 400 OPEN SHELVES

Note: Please tick chosen location of shelf module, either left or right. Basin will be offset either left or right depending on chosen location of shelves.



Total Size (includes 400 mm shelves)	
<input type="checkbox"/>	1200 (800 mm Drawers + 400 mm Shelves)
<input type="checkbox"/>	1300 (900 mm Drawers + 400 mm Shelves)
<input type="checkbox"/>	1600 (1200 mm Drawers + 400 mm Shelves)



Shelf - left

Shelf - right

## STEP 2. CABINET FINISH

### MELAMINE FINISH

- Charred Oak
- Black Forest
- Hickory Walnut
- Southern Oak
- French Oak
- Original Oak

- Smoked Ash
- Classic Walnut
- Honey Ash
- Driftwood
- Nordic Ash
- Premium Ply

### PAINT FINISH

- White Gloss

## STEP 3. RAIL HANDLE OPTIONS

- RM Melamine (colour match with unit)
- RW White Gloss (only with white unit)
- JRAILAL Silver Aluminium
- JRAILBK Black Aluminium

## STEP 4. OPTIONAL EXTRA

- H2 Chrome handle (additional \$27.50 each)
- H2-BK Black handle (additional \$27.50 each)

Continue to next page for basin options



# SOFT SOLID SURFACE PLUS



Date: \_\_\_\_\_

Order Number: \_\_\_\_\_

Merchant: \_\_\_\_\_

Consultant: \_\_\_\_\_

## STEP 5. BASIN OPTIONS

### KORDURA (matte)



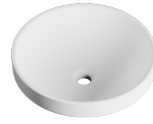
M00415  
Moon  
Round  
Counter Top



PAULA012  
Paula  
Square  
Counter Top



NESO  
Neso  
Oval  
Semi-Recessed



TRES400  
Treste  
Round  
Semi-Recessed

Standard Basins

### KORDURA (matte)



M003455  
Mini Moon  
Round  
Counter Top



CUBE  
Cube  
Rectangle  
Counter Top



ARLO  
Arlo  
Rectangle  
Semi-Recessed

Petite Basins

### CERAMIC (gloss)



A051  
Sleek  
Round  
Counter Top



A054  
Sleek  
Square  
Counter Top



A055  
Sleek  
Rectangle  
Counter Top

Standard Basins

\*Kordura tops do not come pre-drilled with tap holes - this is the responsibility of the installer, and can be cut with a hole saw, jigsaw or router. Petite basins are only compatible with wall-hung or offset mounted taps.