

## DESCRIPTION

Onda Back-To-Wall Bidet

## PRODUCT CODE

Z22

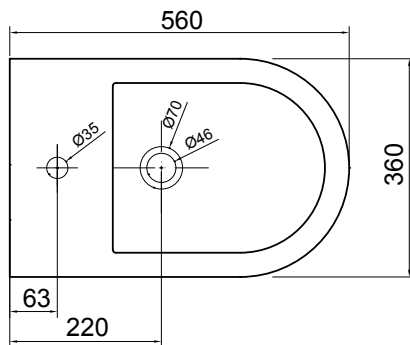


## FEATURES

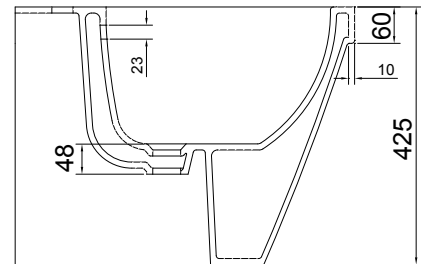
- Dimensions - W360 x H425 x D560 mm
- Vitreous China
- Includes L bracket fixings
- 4 Star WELS rating
- Tap ware and accessories not included

## TECHNICAL DRAWINGS

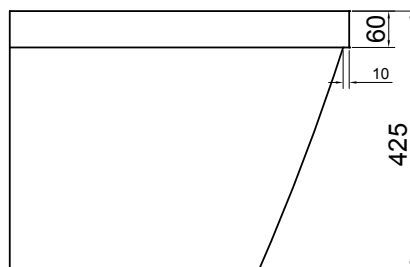
Top



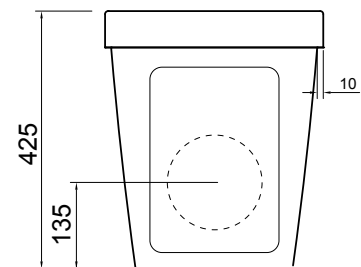
Side Section



Side



Front



## NOTES

Remark: • Distance from tap hole to edge of bowl: Max.80mm, • Dim from bidet back to center tap hole: Min.55mm, • Distance between tap hole to drain hole: Max.170mm Drawing indicates the technical measurement only and is not a reflection of how the product will look. Sizes nominal only. Drawings in millimeters, not to scale. November 2019.