

DESCRIPTION

Twenty 810 Wall Hung, 2 Drawer, White / Timber Veneer

PRODUCT CODE

TW81D2WH / TW81D2WHT



FEATURES

- W810 x H626 x D480 mm
- Available painted White, in Timber Veneer*, or in your choice of paint colour.^
- The paint used on our products is polyurethane or UV based. It is five times harder and more durable than lacquer finishes.
- Timber veneer finishes are 100% natural, so each have variations in grain and colour. All come stained and sealed with a protective UV finish.
- Four bowl options – left (LH), right (RH), centre (CN) and total (TL).
- Handles available in White Oak, Natural Oak or Dark Oak timber veneers.
- Soft-close drawers.
- Italian-made, ceramic top. NZ-made cabinetry.

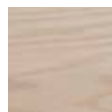
PAINT / TIMBER VENEER FINISHES*



White Paint



White Oak



Blonde Oak



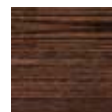
Natural Oak



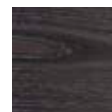
Walnut



Chestnut



Coffee



Noce



Dark Oak

NOTES

Please see reverse for technical drawings.

*Non-stock item. ^15% surcharge applies for custom paint colour, 25% for metallic and black gloss.