

## DESCRIPTION

Soho 610, 2 Drawer Wall-Hung Vanity

## PRODUCT CODE

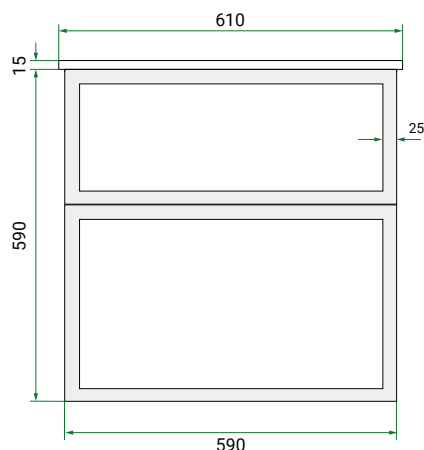
SO61D2WH/ SO61D2WHCC



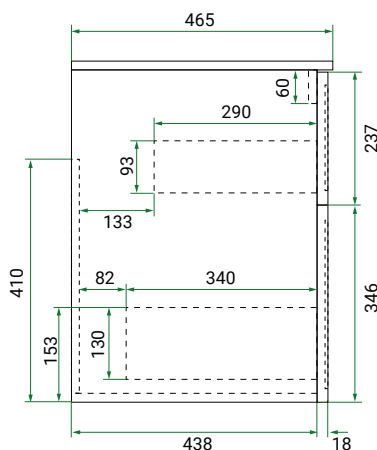
Dimensions	W 610	x H 605	x D 465	(mm)
Finishes	Matte White or Matte Custom Colour Paint.			
Basin	Ceramic top with intergrated basin			
Handle	Choice of Aspect or Arc Handle			
Origin	New Zealand made cabinetry.			
Features	<ul style="list-style-type: none"> <li>• Shaker drawer front design.</li> <li>• 2 Drawers with soft-close &amp; Aspect or Arc Handle.</li> <li>• Ceramic top with gently sloping intergrated basin</li> <li>• The paint used on our products is polyurethane or UV based.</li> </ul>			

## TECHNICAL DRAWINGS

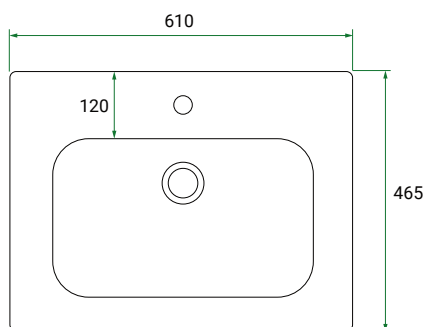
Front



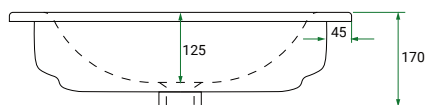
Side



Top Down



Ceramic Top (Front On)



## NOTES

\*Additional Cost. Accessories not included. Drawing indicates the technical measurement only and is not a reflection of how the product will look. Sizes are nominal only. All drawings in millimeters. Drawings not to scale. May 2025.