

Mike Pro Basin Set /

vcbc

DESCRIPTION

Mike Pro Basin Set

PRODUCT CODE

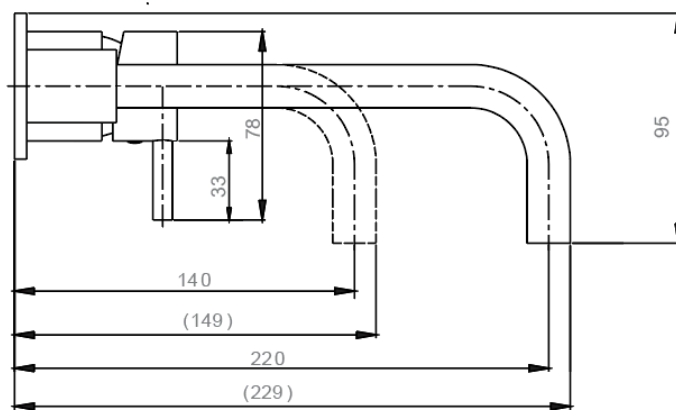
PRO120WNC



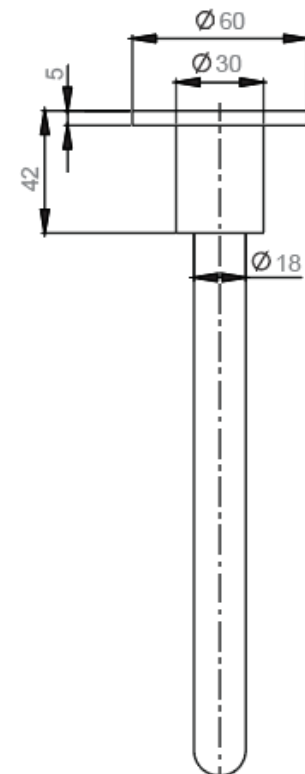
FEATURES

- Dimensions - W229 x H95 x D229
- 2 Hole, Wall-Mounted Basin Set (Without pop-up waste)
- 5 Star WELS Rating
- Water flow regulator as standard
- Spout projection 220mm
- Minimum pressure 0.5 Bar MP
- Plated brass

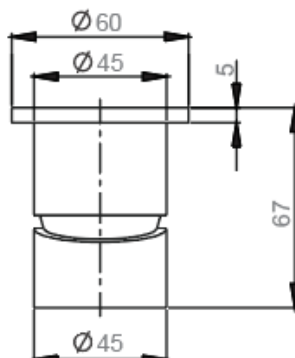
SIDE VIEW (Tap)



TOP VIEW (Tap)



TOP VIEW (Handle)



NOTES

- Tapware & accessories not included • No tap holes or overflow. • Please use a contoured waste with all basins. Requires an unslotted waste.
- Drawing indicates the technical measurement only and is not a reflection of how the product will look. Sizes nominal only. Drawings in millimetres. Not to scale. • Tap holes do not come pre-drilled – this is the responsibility of the installer, and can be cut with a hole saw, jigsaw or router. March 2021.