

DESCRIPTION

Mida Kordura Semi-Recessed Basin

PRODUCT CODE

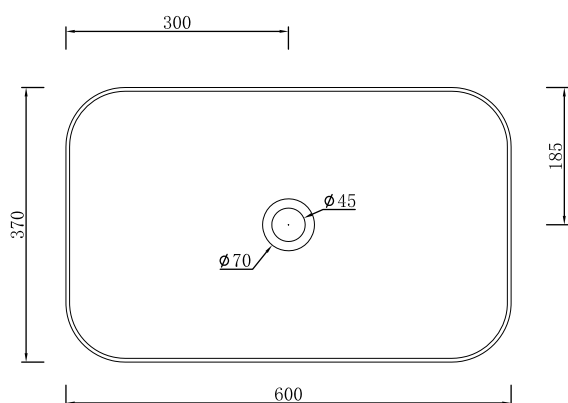
MID6037



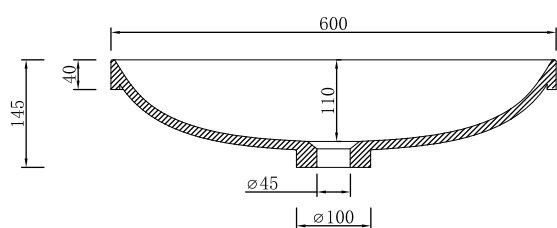
FEATURES

- Dimensions - W 600 x D 370 x H 145 mm
- Matte White
- Seamless, smooth finish
- Rectangular, semi-recessed design
- Made of solid Kordura (acrylic and resin composite)
- Pair with Moode, Tablo, Zero or Soft Solid Surface vanities, and from a selection of Kordura Top finishes.

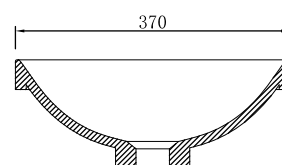
Top



Front Section



Side Section



NOTES

- Tapware & accessories not included
- No tap holes or overflow.
- Please use a contoured waste with all basins. No overflow. Requires an unslotted waste.
- Drawing indicates the technical measurement only and is not a reflection of how the product will look. Sizes nominal only. Drawings in millimetres. Not to scale.
- Tap holes do not come pre-drilled – this is the responsibility of the installer, and can be cut with a hole saw, jigsaw or router. December 2019.