

DESCRIPTION

Hope Rectangle Kordura Undermount Basin

PRODUCT CODE

HOPE



Basin Dimensions W 492 x H 120 x D 252 (mm)

Kordura Top Dimensions W 600 -1000 x H 20 x D 360 (mm)

Finishes Matte White Kordura

Basin Rectangle Undermount Basin (Not sold separately)

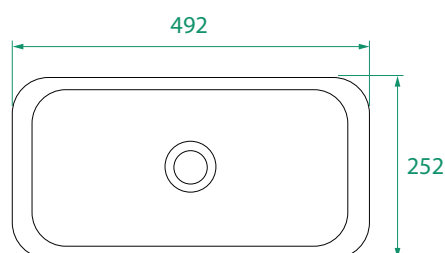
Kordura Top Undermounted to Kordura Top with seamless finish.

Features

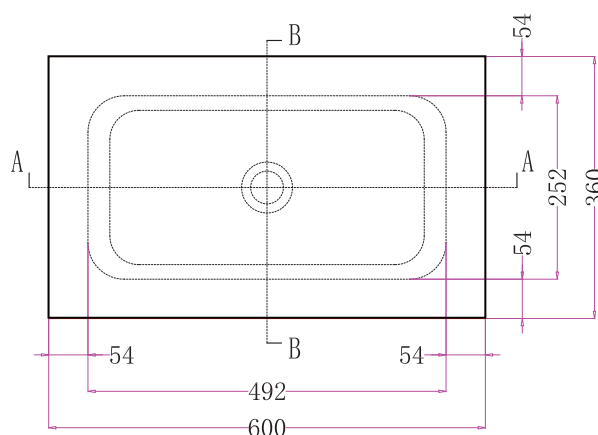
- Perfectly smooth, the basin is seamlessly integrated with a matte white Kordura top, meaning no silicone joins.
- Designed to pair perfectly with our slim vanities.
- Can be undermounted to coloured Kordura tops for an additional cost.

TECHNICAL DRAWINGS

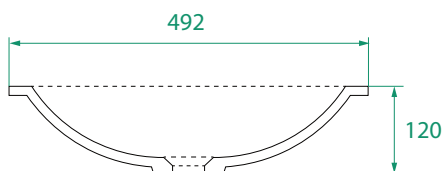
Basin Only (Top Down)



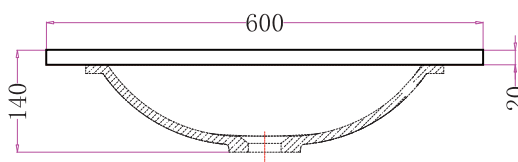
Undermount Basin with 600 Top (Top Down)



Basin Only (Side Section)



Undermount Basin with Top (Side Section)



NOTES

*Additional Cost. Accessories not included. Drawing indicates the technical measurement only and is not a reflection of how the product will look. Sizes are nominal only. All drawings in millimeters. Drawings not to scale. April 2025.