

DESCRIPTION

Glory Undermount Basin – Single

PRODUCT CODE

GLORYSINK



FEATURES

- Dimensions - W 495 x H 120 x D 325 mm
- Designed for Zero, Tablo and Moode vanities.
- Kordura tops are available in White, Carrera, Black Granite and Peak Stone, and in two top thickness: Standard (25mm) and Deep (70mm). Not available with Fine top. Shown with 25mm top.
- Seamlessly integrated with its top, meaning no silicone joins.
- Easy to clean.
- Matte white finish.

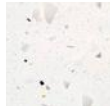
KORDURA TOP FINISHES**



White



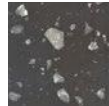
Carrara
Marble**



Ice
Crystal**



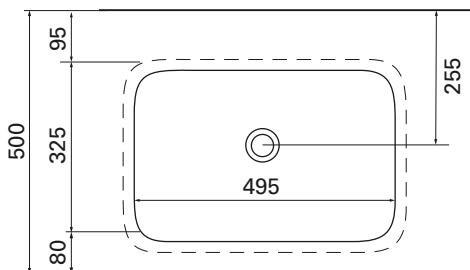
Peak
Stone**



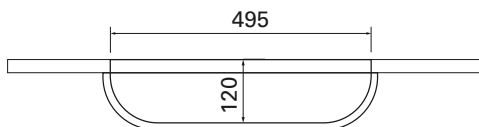
Black
Granite**

TECHNICAL DRAWINGS

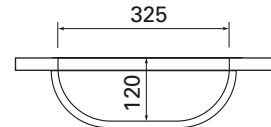
Top



Front



Side Section



NOTES

**15% surcharge applies for coloured Kordura tops. Tapholes do not come pre-drilled – this is the responsibility of the installer, and can be cut with a hole saw, jigsaw or router. When using a hidden bottle trap, we recommend 40551-32. Drawing indicates the technical measurement only and is not a reflection of how the product will look. Sizes are nominal only. All drawings in millimeters. Drawings not to scale. September 2019.

DESCRIPTION

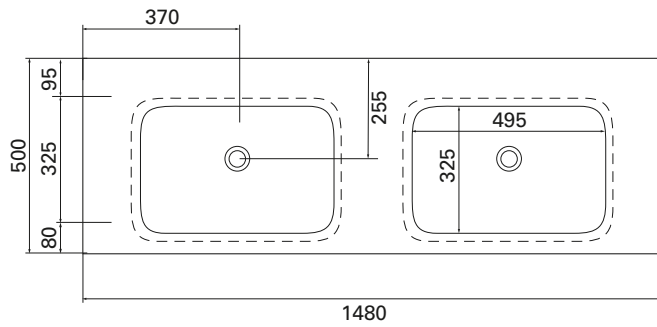
Glory Undermount Basin – 1500 + 1800 Double Bowl Vanities

PRODUCT CODE

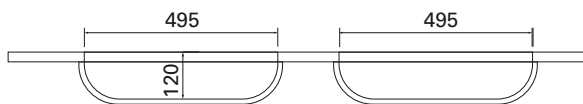
GLORYSINK

TECHNICAL DRAWINGS

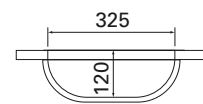
Top



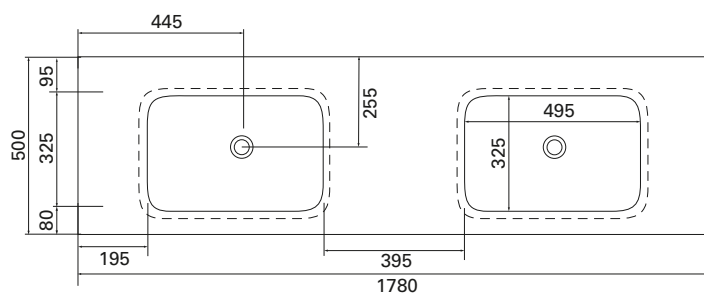
Front



Side Section



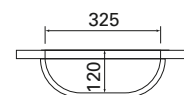
Top



Front



Side Section



NOTES

Drawing indicates the technical measurement only and is not a reflection of how the product will look. Sizes are nominal only. All drawings in millimeters. Drawings not to scale. When using a hidden bottle trap, we recommend 40551-32. September 2019.