

## DESCRIPTION

Fit Wall-Hung Vanity – 1 Door, Left/Right Tap Hole, White / Timber Veneer

## PRODUCT CODE

FIT40WH



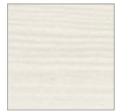
## FEATURES

- Dimensions - W 400 x H 420 x D 220 mm
- Available painted White or in Melamine.\*
- The paint used on our products is polyurethane or UV based. It is five times harder and more durable than lacquer finishes.
- Our timber effect Melamine is a low-pressure laminate.
- Price includes a top, cabinet and handle, excludes tap ware and accessories.
- Polymarble top.
- Taphole is predrilled and can be orientated on the left or right.
- No overflow.
- New Zealand made cabinetry.

## PAINT / MELAMINE\* FINISHES



White Paint



Nordic Ash



Driftwood



French Oak



Manhattan  
Elm



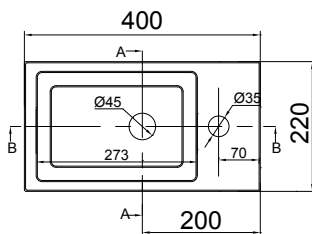
Southern  
Oak



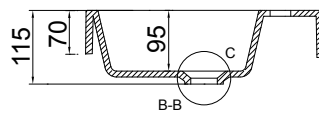
Charred Oak

## TECHNICAL DRAWINGS

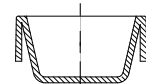
Top



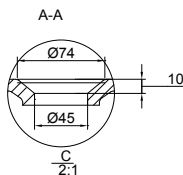
Front Section Basin



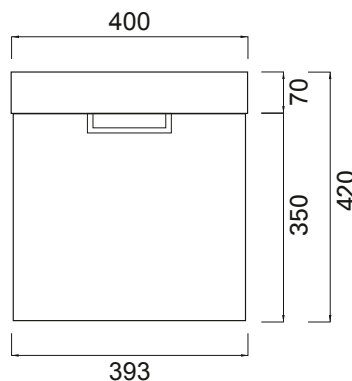
Side Section Basin



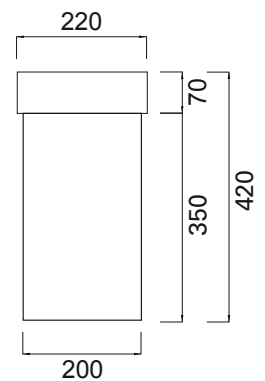
Detail of Waste



Front



Side



## NOTES

\*Non-stock item. Drawing indicates the technical measurement only and is not a reflection of how the unit will look. Sizes are nominal only. All drawings in millimeters. Drawings not to scale. August 2019.