

DESCRIPTION

450 Open Shelf

PRODUCT CODE

LTOSENG45 / LTOSENG45M / LTOSENG45T / LTOSENG45CC



Dimensions W 450 x H 710 x D 290 (mm)

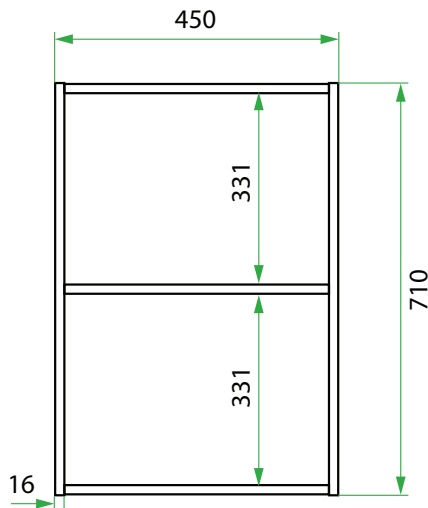
Finishes Matte English White or Matte Custom Colour Paint*

Origin New Zealand made cabinetry

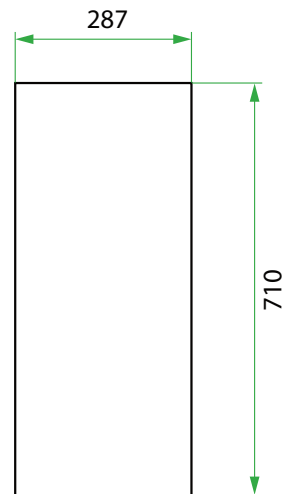
Notes See website for finish colours.

TECHNICAL DRAWINGS

Front



Side



NOTES

*Additional Cost. Accessories not included. See our website for product prices. Drawing indicates the technical measurement only and is not a reflection of how the product will look. Sizes are nominal only. All drawings in millimeters. Drawings not to scale. June 2023.