

DESCRIPTION

Eden 810, 2 Drawers Wall-Hung Vanity

PRODUCT CODE

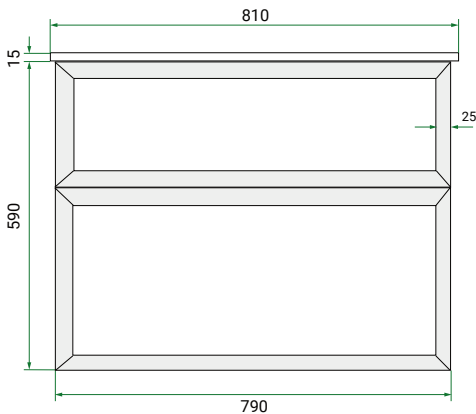
EDN81D2WH/ EDN81D2WHCC



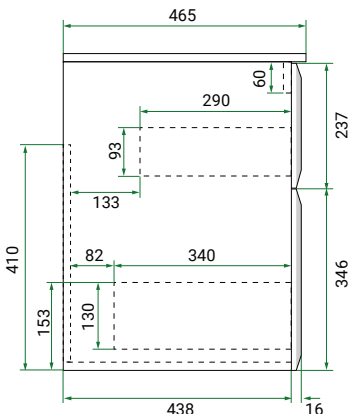
Dimensions	W 810      x H 605      x D 465      (mm)
Finishes	Matte White or Matte Custom Colour Paint.
Basin	Ceramic top with intergrated basin
Handle	Choice of Aspect or Arc Handle
Origin	New Zealand made cabinetry.
Features	<ul style="list-style-type: none"><li>• Bevelled edge design.</li><li>• 2 Drawer with soft-close &amp; Aspect or Arc Handle.</li><li>• Ceramic top with gently sloping intergrated basin</li><li>• The paint used on our products is polyurethane or UV based.</li></ul>

TECHNICAL DRAWINGS

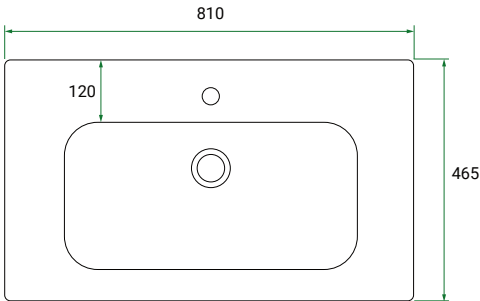
Front



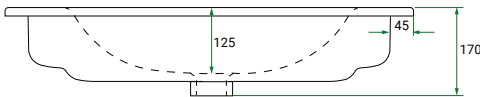
Side



Top Down



Ceramic Top (Front On)



NOTES

\*Additional Cost. Accessories not included. Drawing indicates the technical measurement only and is not a reflection of how the product will look. Sizes are nominal only. All drawings in millimeters. Drawings not to scale. May 2025.