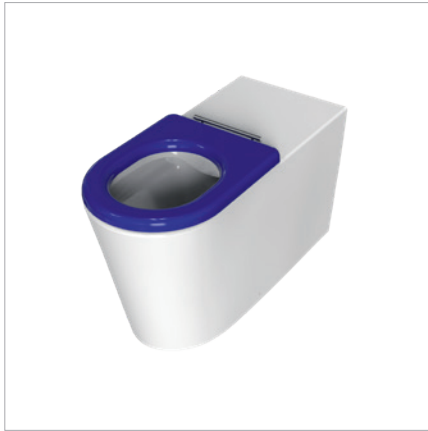


## DESCRIPTION

Accessible Wall-faced Toilet

## PRODUCT CODE

COVWFBL

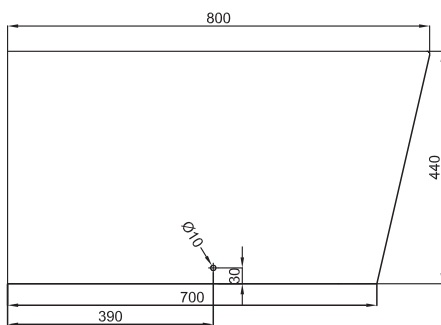


## FEATURES

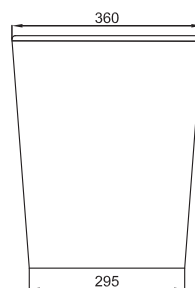
- Dimensions - W360 x H440 x D800 mm
- Toilet includes seat (no lid). Floor-fix screw and elbow. Pneumatically controlled K301Q-D cistern and K5212M-Q flush Plate.
- Vitreous china, rimless design, glazed rim and trap.
- Removable seat with stainless steel hinges.
- Efficient 4.5/3 litre flush distribution.
- 4 Star WELS rating.
- P-Trap pan, and comes with S-Trap Connector (284.M.30846).

## TECHNICAL DRAWINGS

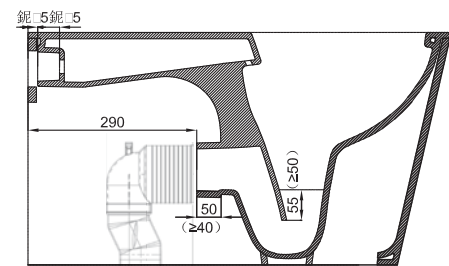
Side View of Pan



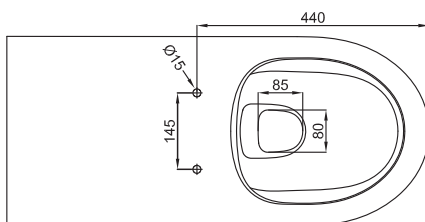
Front View of Pan



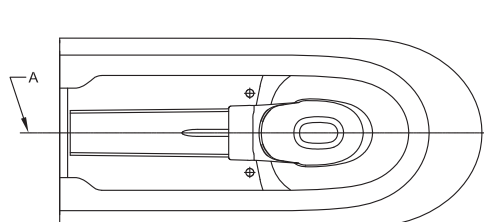
Suite Section of Pan



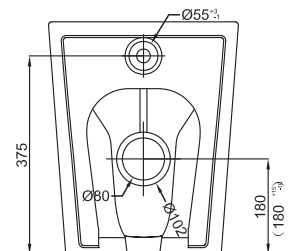
Top View Pan



Bottom View Pan



Back View of Pan



## NOTES

Drawing indicates the technical measurement only and is not a reflection of how the unit will look. Sizes are nominal only. All drawings in millimeters. Drawings not to scale. November 2022.