

DESCRIPTION

Hanger 50, Chrome Plated

PRODUCT CODE

2050121

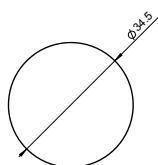


FEATURES

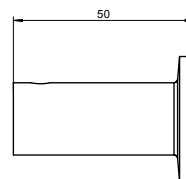
- Dimensions - W 35mm x H 35mm x D 50mm
- Wall-hung, chrome finish.
- Easy installation: double pitch screw, hidden attachments.
- Anti-corrosion, long last durability with easy maintenance & impact resistance.
- A comprehensive collection of bathroom accessories with architectonic forms that dominate with their resistance.
- Designed by Cosmic, European top leaders in manufacturing high quality bathroom fittings with a focus on contemporary design and innovation.

TECHNICAL DRAWINGS

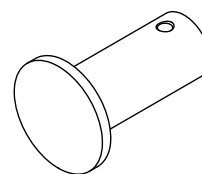
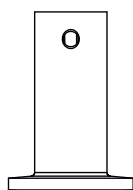
Front



Back



Top



NOTES

Drawing indicates the technical measurement only and is not a reflection of how the unit will look. Sizes are nominal only. All drawings in millimeters. Drawings not to scale.