

## DESCRIPTION

Cangas Slim 800, 2 Drawer, Wall-Hung Vanity

## PRODUCT CODE

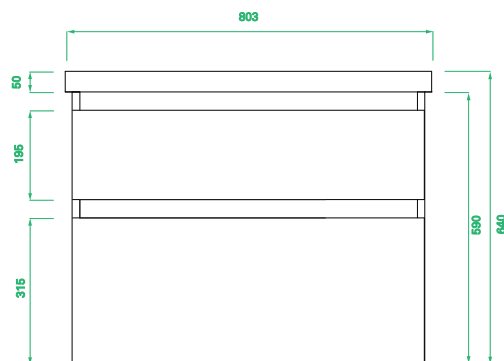
CAS80D2WH / CAS80D2WHM



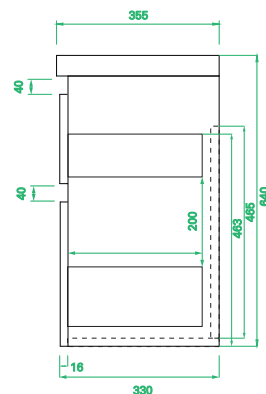
Dimensions	W 800	x H 640	x D 355	(mm)
Finishes	White Paint or Melamine.			
Basin	Ceramic top with overflow and offset right taphole.			
Handle	Recessed rail design White Gloss (match), Melamine (match) or contrasting Black or Silver Aluminium Rail (centre only)			
Origin	New Zealand made cabinetry.			
Features	<ul style="list-style-type: none"> <li>• Slim depth of 350mm.</li> <li>• 2 soft-close drawers.</li> <li>• Ceramic top with integrated basin &amp; overflow.</li> <li>• Our paints are either polyurethane or UV based.</li> <li>• Timber Effect Melamine is a low-pressure laminate.</li> </ul>			

## TECHNICAL DRAWINGS

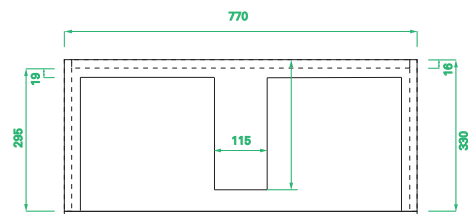
Front



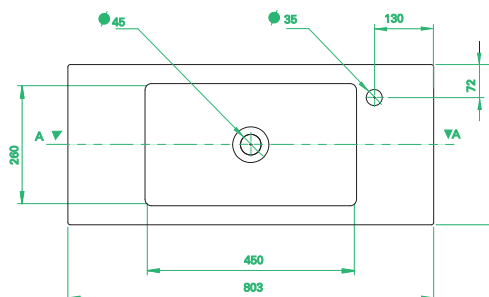
Side



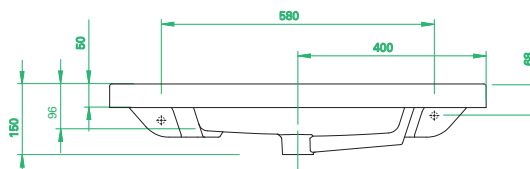
Drawers



Top Down



Basin Cross Section



## NOTES

\*Additional Cost. Accessories not included. Drawing indicates the technical measurement only and is not a reflection of how the product will look. Sizes are nominal only. All drawings in millimeters. Drawings not to scale.