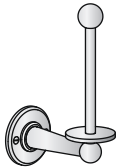
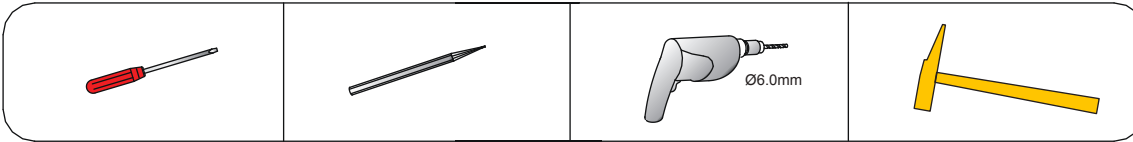
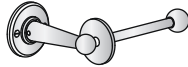


Tools required:

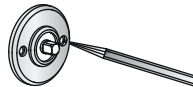


For a Spare WC Roll Holder the accessory must be installed vertically.



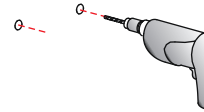
For an Open WC Roll Holder the accessory must be installed horizontally.

①



Determine the final installation position, mark the fixing hole positions in pencil.

②



Using a 6mm drill bit, drill holes on the marked positions.

The product is 100% brass chrome plated with polished Stainless Steel Screws.

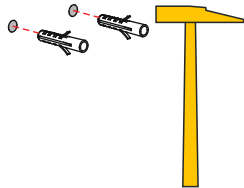
Suggest cleaning the product surface with clean water or soft detergent, and then dry with soft towel.

Please do not use any detergent containing hydrochloric acid or caustic chemicals.

Avoid scratching the surface with hard objects, and do not use a coarse cloth to wipe.

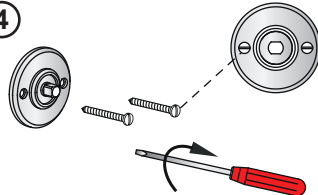
The product should be installed by a professional, following the recommended installation instructions.

③



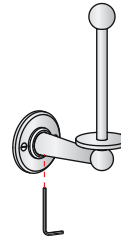
Insert the rawl plugs into the drilled holes.

④



Screw in the stainless steel screws to secure the base to the wall. Please ensure that the screw heads are parallel to the floor.

⑤



Insert the WC Roll Holder body into the base. Fix it with the allen key supplied.