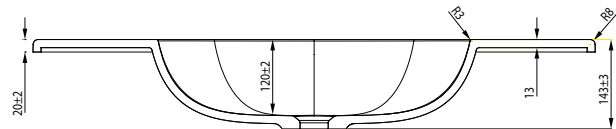
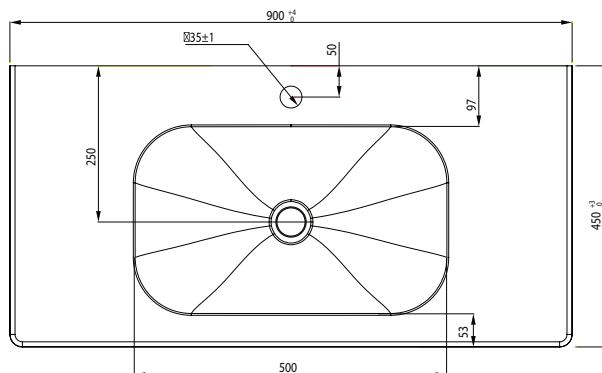


FR90D2WH/FR90D2WHM

# FRESH

900, WALL HUNG, 2 DRAWER

vcboc  
FOR BATHROOMS



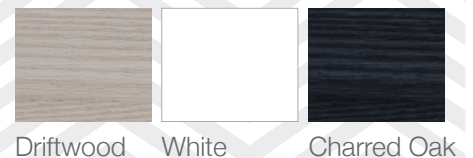
Fresh Basin

NB: Drawings indicate the technical measurements only and is not a reflection of how the unit will look.

FR90D2WH/FR90D2WHM  
FRESH 900, WALL HUNG, 2 DRAWER

- Dimensions - W 900mm H 470mm D 450mm
- Features a Polymarble top
- Paint - The paint used on our products is polyurethane or UV based. It is five times harder and more durable than lacquer finishes. White only.
- TIMBER EFFECT (Melamine)- Our woodgrain melamine is a low pressure laminate. Two colours are available Charred Oak and Driftwood.

#### FINISHES



Driftwood

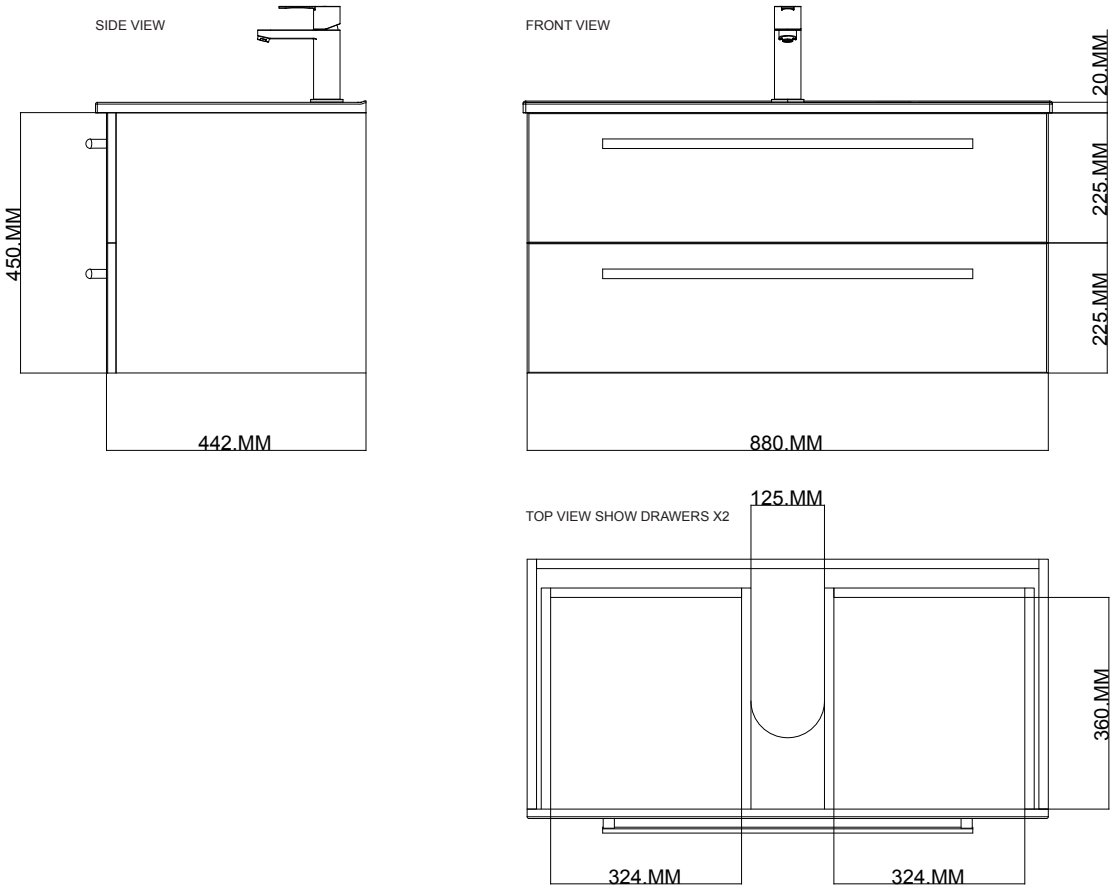
White

Charred Oak

FR90D2WH/FR90D2WHM  
**FRESH**  
900, WALL HUNG, 2 DRAWER



Fresh Cabinet



NB: Drawings indicate the technical measurements only and is not a reflection of how the unit will look.