

SP90WH/SP90WHM

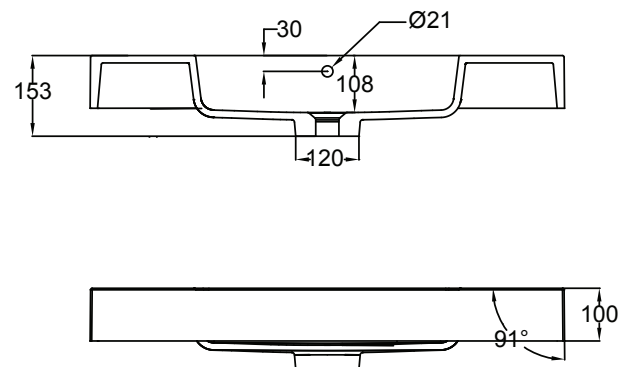
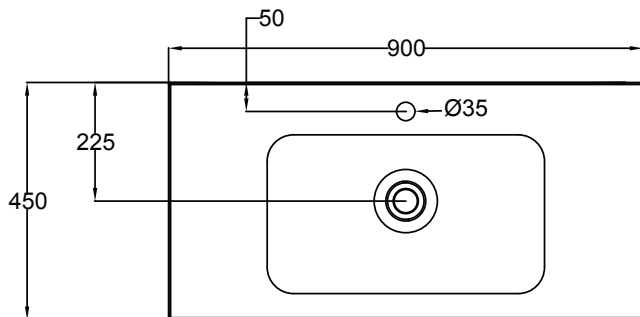
SPLASH

900, 2 DOORS, 1 DRAWER, WALL-HUNG

vcboc
FOR BATHROOMS



Splash Basin

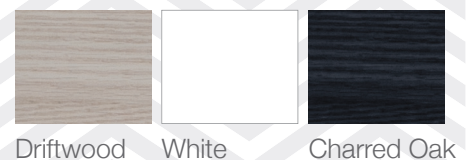


NB: Drawings indicate the technical measurements only and is not a reflection of how the unit will look.

SP90WH/SP90WHM SPLASH 900, 2 DOORS, 1 DRAWER, WALL-HUNG

- Dimensions - W 900mm H 500mm D 450mm
- Paint - The paint used on our products is polyurethane or UV based. It is five times harder and more durable than lacquer finishes. White only.
- TIMBER EFFECT (Melamine)- Our woodgrain melamine is a low pressure laminate. Three colours are available Driftwood and Charred Oak.

FINISHES



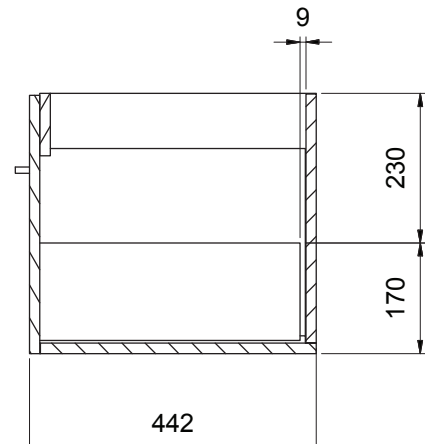
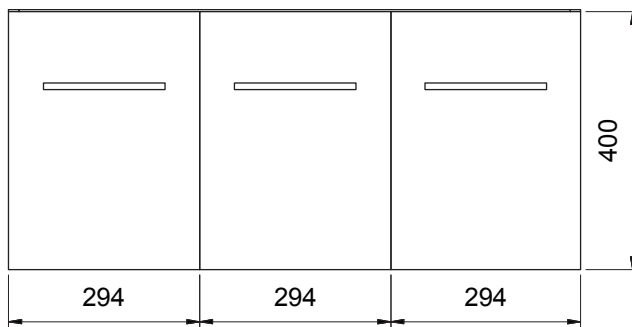
SP90WH/SP90WHM

SPLASH

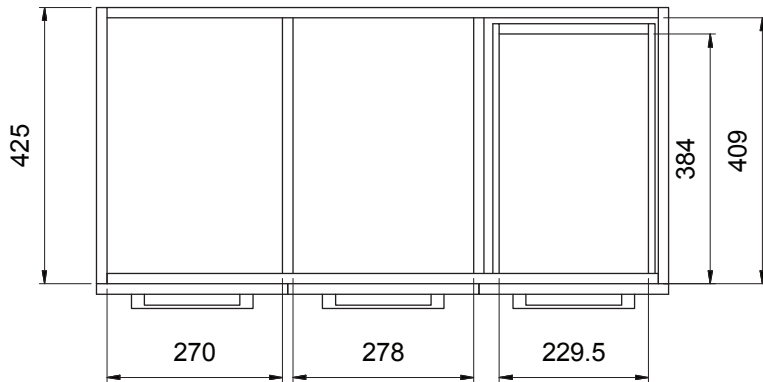
900, 2 DOORS, 1 DRAWER, WALL-HUNG

vcboc
FOR BATHROOMS

SPLASH Cabinet



SPLASH Wall Unit Side View



SP90WH Top View Showing Cupboards and Drawer

NB: Drawings indicate the technical measurements only and is not a reflection of how the unit will look.