



Bathroom furniture installation instructions

Contents

Getting started	2	Plumbing recommendations	5
Required tools & materials	2	The Michel César warranty	6
Vanity installation	2-3	Trouble shooting	6
Hinge adjustment	4	Cleaning & maintenance	6
Soft close drawers	4		

Michel César

Getting started

All goods must be checked prior to installation. If defects are found due to manufacturing faults then goods MUST NOT be installed. The merchant must inform the manufacturer.

If there is a proven manufacturing defect i.e. outside of tolerance and the installation is carried out then, the manufacturer will replace the item however the installation costs will be the responsibility of the installer.

When installing the cabinets – the drawers and doors may need to be adjusted due to movement throughout carrying the goods. Please view the instructions below on Hinge adjustment and drawer adjustment.

Vanity installation

PLEASE READ CAREFULLY – IT IS RECOMMENDED THAT A QUALIFIED, LICENSED TRADESPERSON INSTALL YOUR UNIT.

01. Prior to installation it is important to inspect the unit to ensure no damage has occurred in transit. If damage has occurred, or a visible defect exists, do not proceed with installation and advise supplier immediately.

Note: *Manufacturer will not be liable for any installation, removal or re-decorating costs. The warranty will be null and void if damage occurred during or after installation.*

02. Check the wall is straight, (not bowed or twisted). Ensure unit is square against the wall before securing. Door and drawer alignment could be affected otherwise.

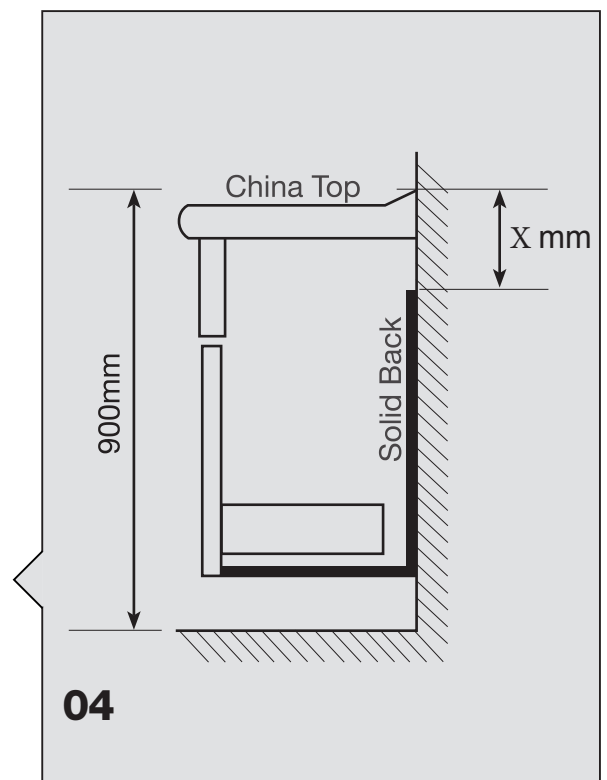
03. Remove drawers before installation according to 'Appendix A'.

04. For wall hung units: Decide appropriate height for top of unit, about 900mm. Measure distance from top of unit to top of solid back allowing for the china top. Mark this distance down from total height allowed for unit, e.g. if distance from top to solid back is X mm, measure X mm down from the recommended 900mm (*refer to image 04*).

For Tall Cabinets with a hanging rail, measure from top of unit to bottom of fixing rail. Mark distance on wall as mentioned for solid back units. Fix bottom of hanging rail above mark.

Required tools & materials

- ✓ Spirit level
- ✓ Tape measure
- ✓ Screwdriver & screws
- ✓ Caulking gun
- ✓ Pencil
- ✓ Drill & bits
- ✓ Masking tape
- ✓ Silicone Sealant
- ✓ Cleaning materials



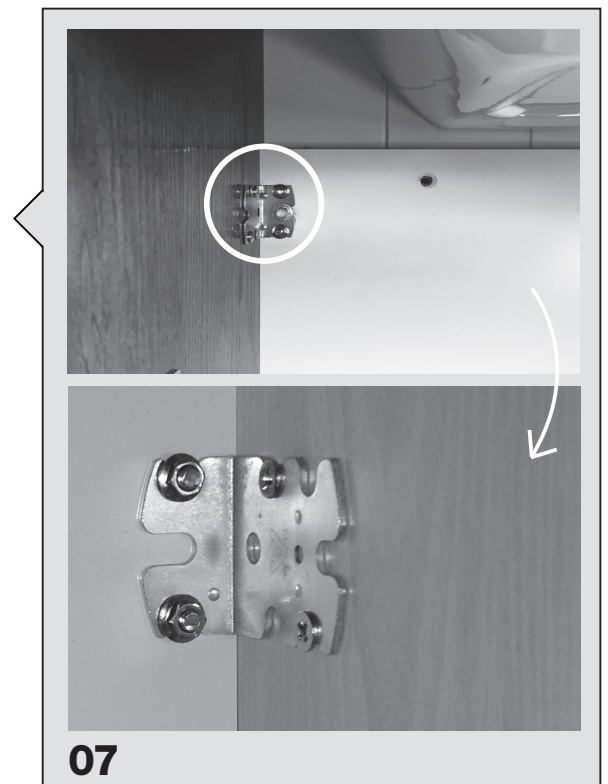
05. Drill holes for pipes in base/rear of unit with appropriate size hole saws.
06. Position unit over pipes in correct position. Check level with spirit level.
- 07.** Securely fasten unit to wall through the back, no further than 100mm from end of cabinet. Upper fixings no lower than 50mm from top of back. Where possible, fasten cabinet through steel bracket in the top corner of unit (*refer to image 07 on page 03*).
- 08.** Tops with allowance for bolts must be fixed through bolt holes. Tops without fixing holes should be secured with silicone only (*refer to image 08 on page 03*). We supply fischer fixing bolts or smiler for the tops.
 - 8a. As ceramic tops are not perfectly flat (may vary up to 5mm), due to the manufacturing process, it may be necessary to pack the tops up to stop movement or avoid the doors or drawers binding. Up to a 5mm tolerance is acceptable.
09. Seal all edges where water penetration may occur, i.e. between top, wall and floor etc. (Materials used in the construction of bathroom furniture are water-resistant not waterproof). Ensure silicone is used according to manufacturers' instructions. DO NOT use adhesive, this will void warranty.
10. Where a separate basin is to be fitted it is essential that the basin must be centered over the cutout and be fully sealed to the cabinet and top to prevent any water penetration.
11. Always fix separate shelf to drawer unit module with connectors, if ordered as a combination.
12. Adjust doors/drawers if required, as there may have been some movement during transportation or installation (*refer to hinge adjustment*). However first check that the unit has not been twisted during installation.

13. Tiles/Mirrors etc. Surrounding the installation must provide adequate space for future removal of product if required. Tiles or mirrors must clear cabinet by at least 3mm.

14. Light - Product should not be exposed to direct sunlight or heat-lamps etc as this could cause premature discolouration or fading.

Recommendations for plumbing on page 05.

Note: All fittings have been factory set and should not need adjustment. Check that the unit has not been twisted during installation before making adjustments. Drawer fronts on some models may be adjusted, if necessary refer to manufacturer.



07



08

Hinge adjustment

It is the responsibility of the licensed installer to make any adjustments to align doors and drawers after installation if required.



Depth Adjustment



Height Adjustment



Side Adjustment

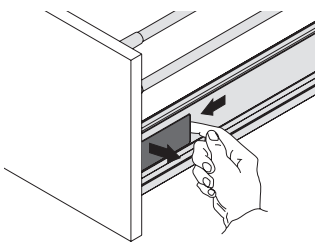
APPENDIX A

Soft close drawers

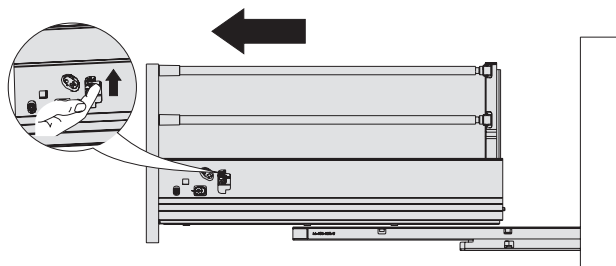
When a cabinet has soft close drawers, the drawers will need to be removed prior to installation of the cabinet. Please view the following instructions on how to remove the drawers.

REMOVAL

When you pull the drawer out you will notice a grey label on each side of the drawer (as per the diagram)
When the label on each side is removed – it will reveal a small lever on each side of the drawer. Both levers are to be pulled up at the same time, then slide the drawer out slowly towards you.



Remove cover cap



Release drawer from the slide, pull out the drawer
(Failure to do this will damage the drawer running mechanism)

DRAWER RE-INSTALLATION

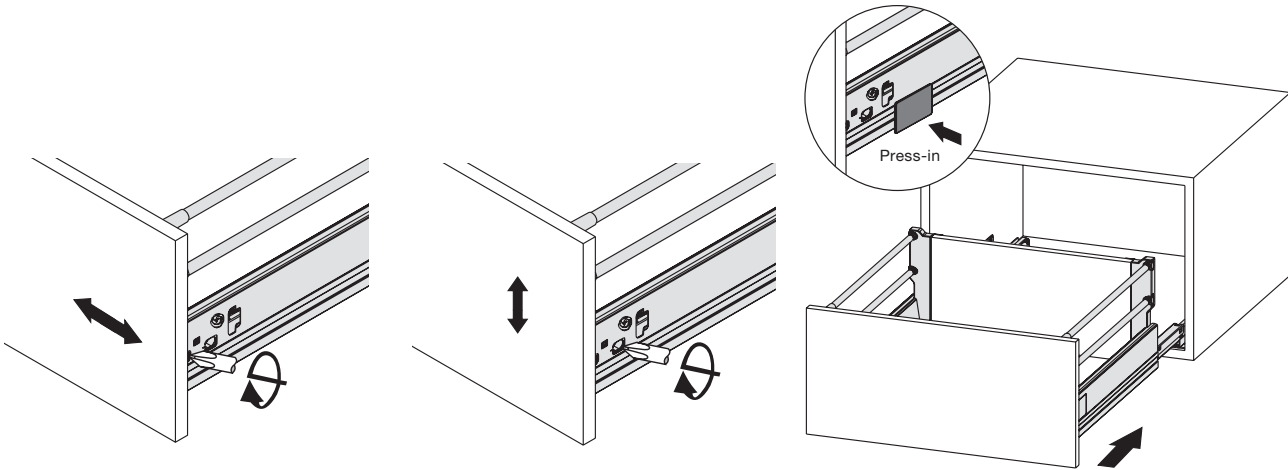
Push runners into cabinet, place drawer body on runners and push in firmly. Two clicks should be heard as drawer sides click into place. Replace drawer front as per reverse of diagram above.

ENGAGING THE SOFT-CLOSE MECHANISM

Put the drawer back in half way – close the drawer. Then pull the drawer back towards you. Underneath the drawer you will feel a small tab. This is on each side of the drawer. Pull the tab towards you and at the same time push the front of the drawer back. This will engage the soft close mechanism.

ADJUSTMENT

Check the unit is square on the wall before making adjustments.



Left/Right Adjustment

Height Adjustment

Fit cover caps

Plumbing recommendations

- » Single drawer units are designed to be plumbed with a bottle trap.
- » Waste is not to be over-tightened to avoid stress on basin or top.
- » Contoured waste to suit must be fitted to basin.
- » We do not recommend the use of silicone when installing the contoured waste.
- » Basin overflow must line up with waste opening.
- » Waste overflow hole opening must not be blocked by sealant.
- » Brackets must not be more than 200mm from each end.

The Michel César bathroom furniture warranty

- » Michel César warrants that in the manufacture of its products only high quality workmanship and materials have been used.
 - » If within five years there should be a fault with either materials or workmanship Smail & Co will repair at its own cost or, with consideration, arrange the replacement or repair of faulty product. If replacement or repair is hindered by incorrect installation, Smail & Co will not be responsible for removal/replacement.
 - » This warranty does not cover damage by improper installation, i.e. fixing with adhesives, abuse, accident, misuse, excessive wear and tear, negligence, neglect, natural causes, e.g. water and sunlight, improper care and maintenance, water temperatures in excess of 60 degrees Celsius, humidity, direct lighting and other environment conditions.
 - » The Michel César warranty applies for five years from the date of purchase. Proof of the purchase date needs to be produced by the purchaser when making a claim.
 - » All measurements are in millimeters and are nominal only.
- Note:** Failure to follow instructions will void warranty.
-

Trouble shooting

What happens if my soft close drawer is not closing properly? It means that your soft close drawer is not engaged correctly. Follow the instructions on page 4 to re-engage the soft close mechanism.

Why is my soft close drawer making a noise on closing, and not closing smoothly?

If the release tabs on the drawer are not lifted properly, then this may cause the cog to strip on the soft close mechanism. Please contact Smail Customer services for a replacement. This is not covered under warranty.

What are the dimensions of the cabinets – internal and external? All dimensions can be found on our web site – www.michelcesar.co.nz

Can I get an extra tap hole in my vanity top?

Yes – most tops we can put an extra tap hole in. This can be done at an extra cost of \$60.00+GST per tap hole.

Cleaning & maintenance

- » To maintain the finish on your unit and top, use only a soft cloth, or a weak solution of non-abrasive detergent. Do not use cleaners that incorporate isopropyl alcohol. Polymarble tops should only be cleaned with soapy water and a soft cloth.
- » To restore accidental scratches, burns etc. on gloss painted finishes, rub gently with a very light cutting compound. On matt or timber finishes contact the manufacturer.
- » Mirrors should be cleaned with diluted methylated spirits only (dilute 1:10). Remove all moisture caused by splashes, wet hands, or steam with a chamois or soft cloth after use. Do not wipe the exposed edge of the mirror.
- » Michel César warranty on mirrors applies for one year from the date of purchase.

Michel César

Auckland 4–8 Ace Place, Kingsland | Tel +64 9 309 9109 | Fax +64 9 309 9343

Christchurch 86 Wigram Road | Tel +64 3 343 0969 | Fax +64 3 343 0967

www.michelcesar.co.nz