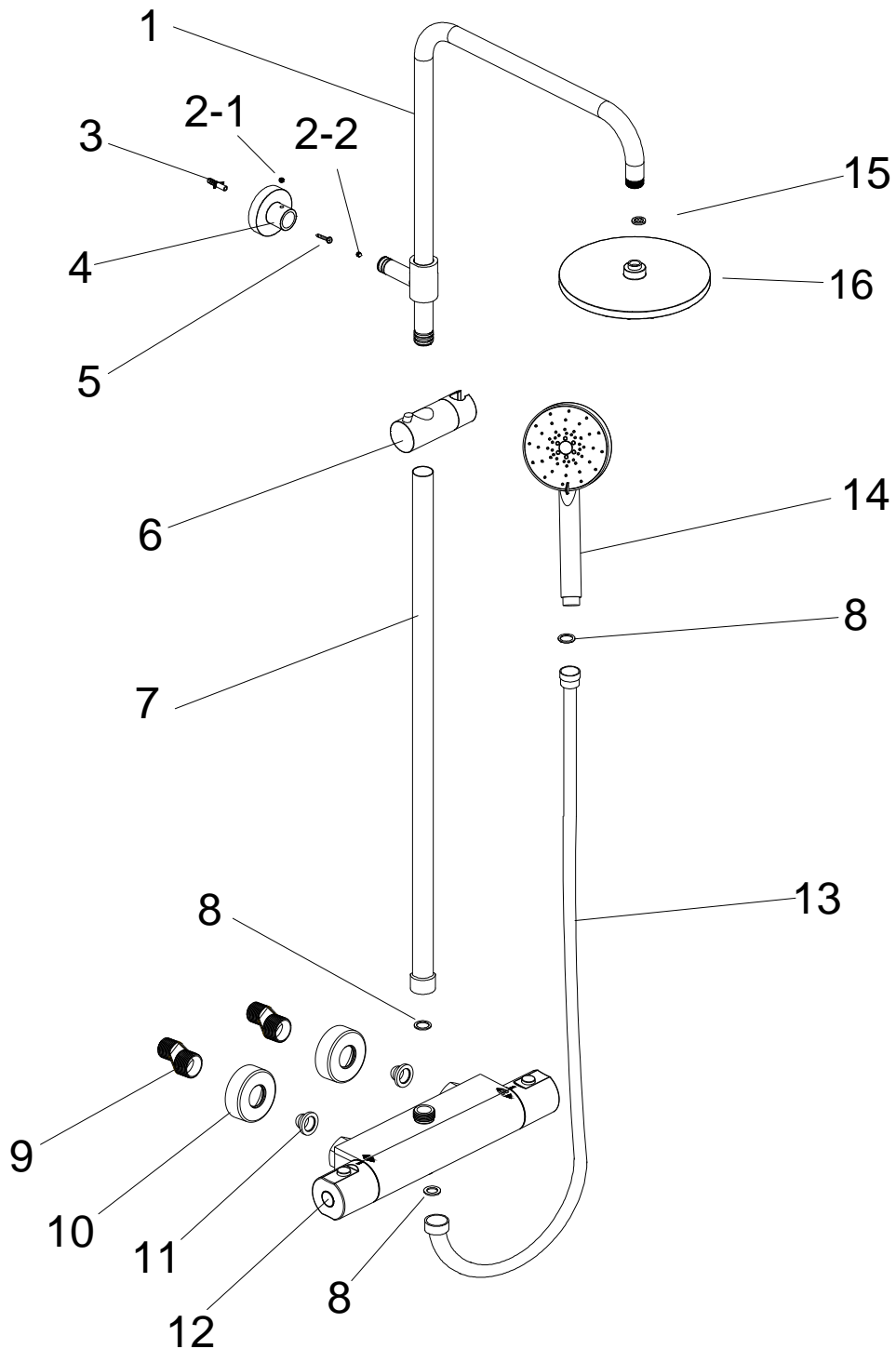


Instruction Manual

Please check the components in accordance with the table list below.
Any shortage, please contact the local agent.

The appearance of the products can vary according to different models.
Below drawing is for reference only.

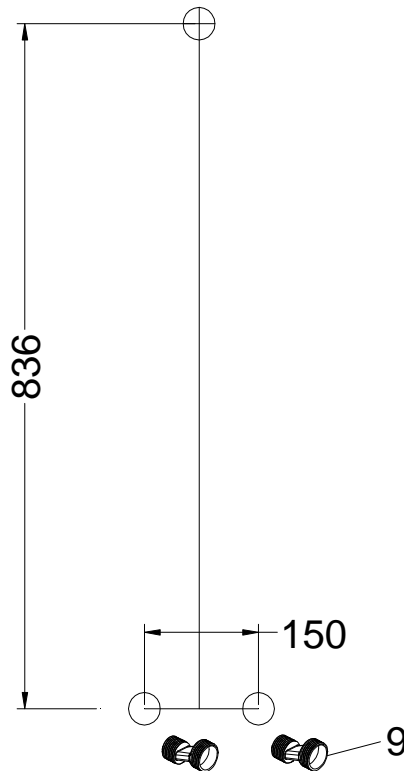
Warning: Please ensure there are no hidden service pipes or cables where you intend to drill!



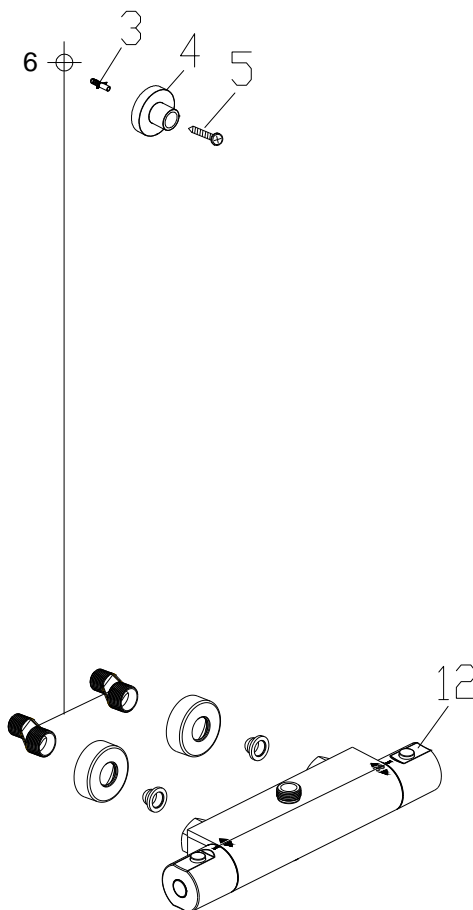
Part List

No.	Part Name	Qty
01	<i>Curve arm</i>	1
02	<i>Fixing screw</i>	2
03	Plug	1
04	Wall bracket	1
05	Screw	1
06	Slider	1
07	<i>Riser tube</i>	1
08	<i>Rubber gasket</i>	3
09	<i>S-connectors</i>	2
10	<i>Wall covers</i>	2
11	Rubber gasket with filter	2
12	<i>mixer</i>	1
13	Hose	1
14	Handshower	1
15	<i>Rubber gasket</i>	1
16	Fixed shower	1

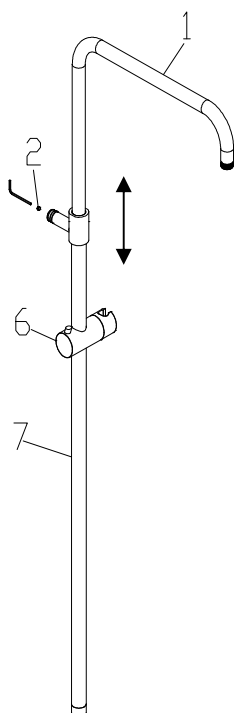
① *Drill one hole about 836 mm above the inlet holes on the wall Mount the two S-connectors(09) on two water inlet holes.*



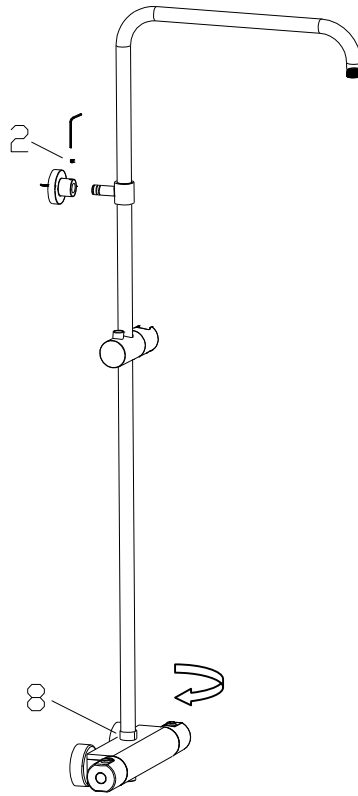
② *Insert the plugs (3) into the wall, fix the wall bracket (4) with the screw (5) on the wall and mount the mixer(12).*



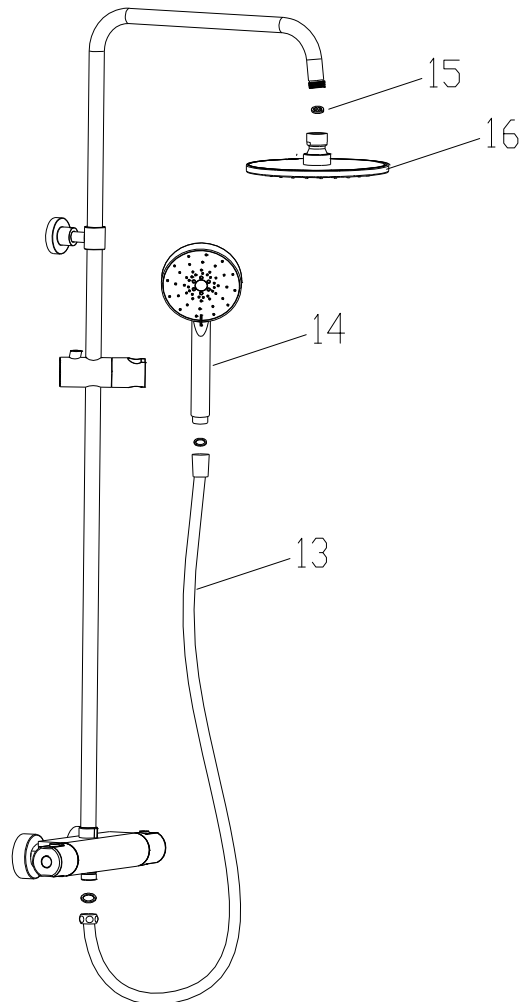
Assemble the slider (6), riser tube (7) and curve arm (1). Adjust the connecting sleeve to the suitable position, and fix it by screw (2)



③ *Screw the nut and rubber gasket (8) on the mixer, and fix the connecting sleeve in the wall bracket by fixing screws (2).*

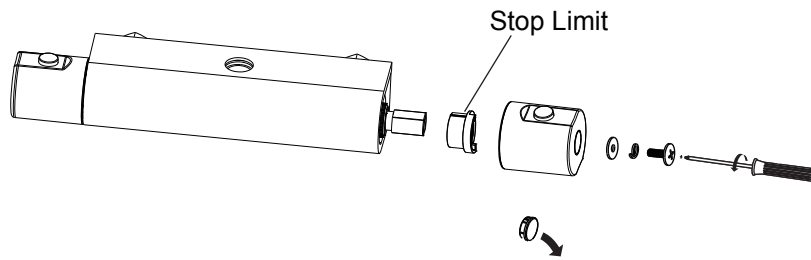


④ *Fix the showers (14 +16) and hose (13), adding rubber gaskets inside.*

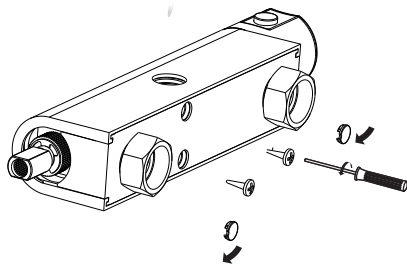


1. Replace cartridge :

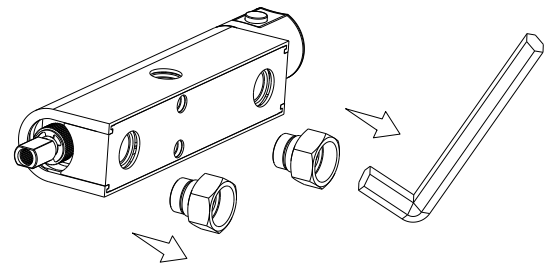
Step 1: Separate the temperature control handle from the thermostatic cartridge, remove the stop limit.



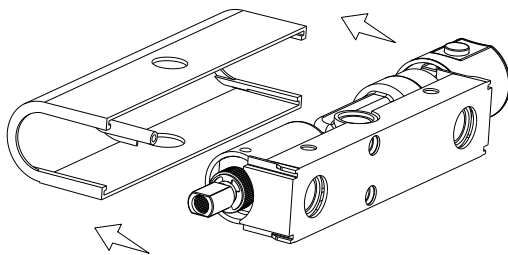
Step 2: Remove the screws.



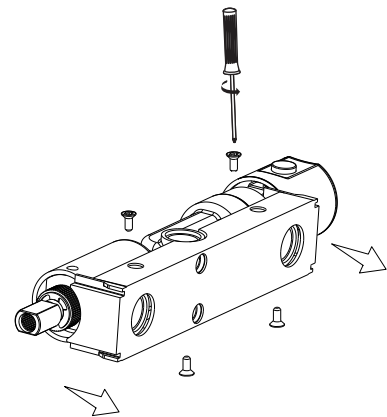
Step 3: Remove the connectors.



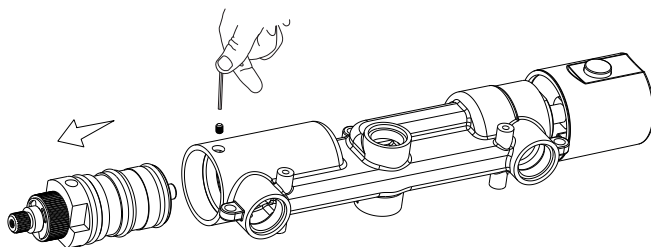
Step 4: Separate the valve cover from the valve body.



Step 5: Separate the the back cover from the valve body.

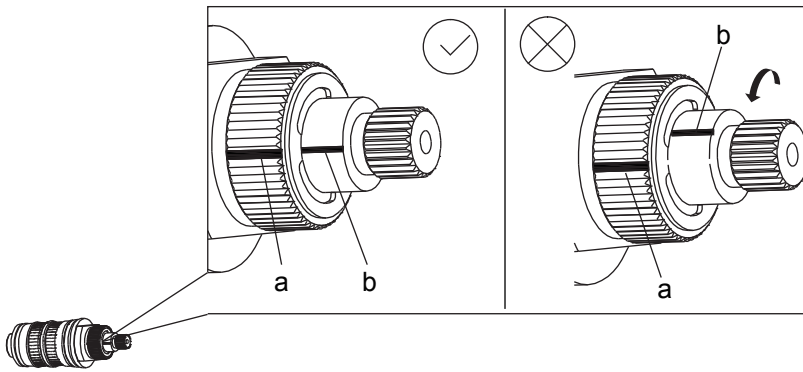


Step 6: Remove the grub screw and take out the cartridge.

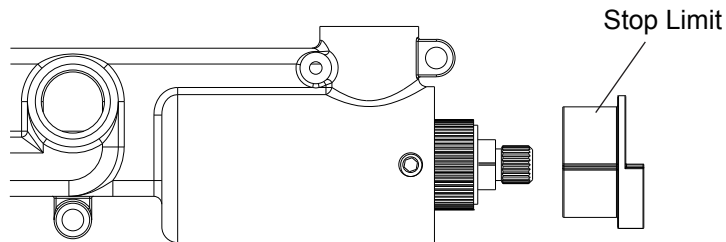


Step 7: Put the new cartridge into the valve body, and put the covers, stop limit and handles back in sequence. Set the temperature (refer to section "Temperature Setting").

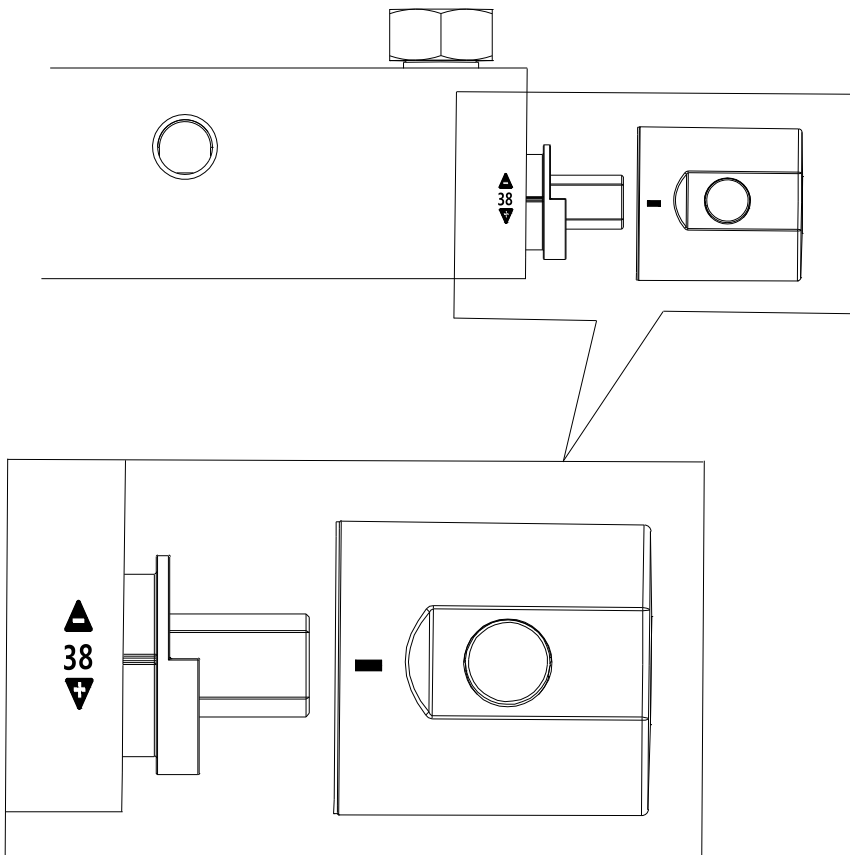
2. Temperature Setting:



Step 1: Align the black marks on part a and b.



Step 2: Put the stop limit back onto the cartridge. Ensure that the black mark on the stop limit aligns with the mark on the cartridge.



Step 3: Put the valve covers and handles back on and ensure the etching on the valve cover aligns with the mark on the cartridge and etching on the handle.

Working Conditions

1. Water quality: Lime scale may affect the cartridge function over time.
2. This valve is a thermostatic mixing device and therefore requires the water supplies to be balanced. Whilst the unit will function on a low pressure system, flow rates will be affected especially through the dump shower so the recommendation is to run this on balanced hot and cold water pressure 2bar and above.
3. For the hot water, the recommended temperature is between 55 and 65°C. If it goes above 65 degrees, then it will affect the cartridge over time and void any warranty.