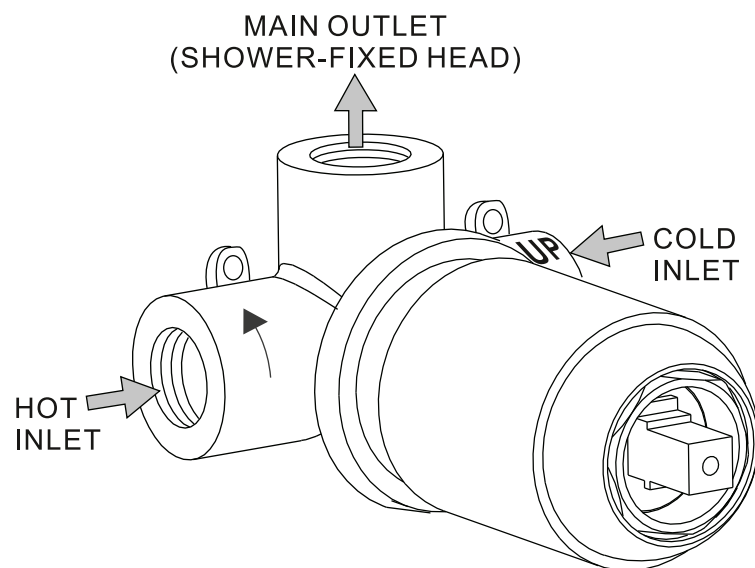


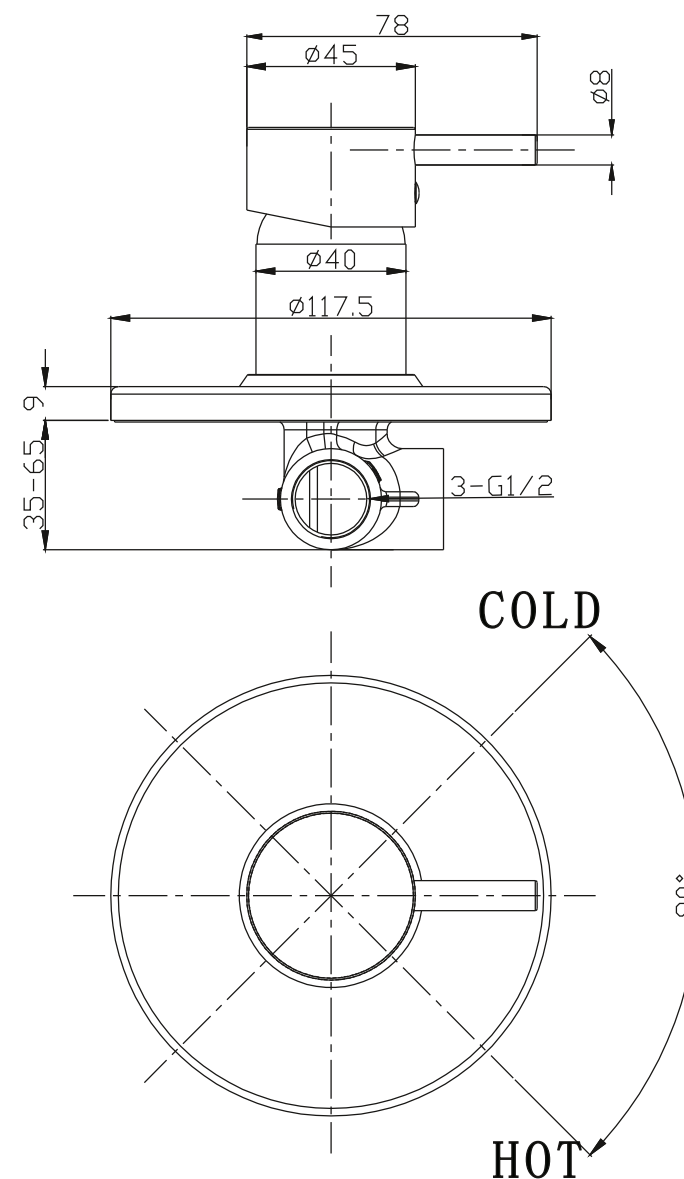
INTRODUCTION

This valve is suitable for use with all water systems with an operating pressure 0.5 Bar up to 5.0 bar, (beyond which we recommend pressure reducing valves to be fitted).

PARTS IDENTIFICATION

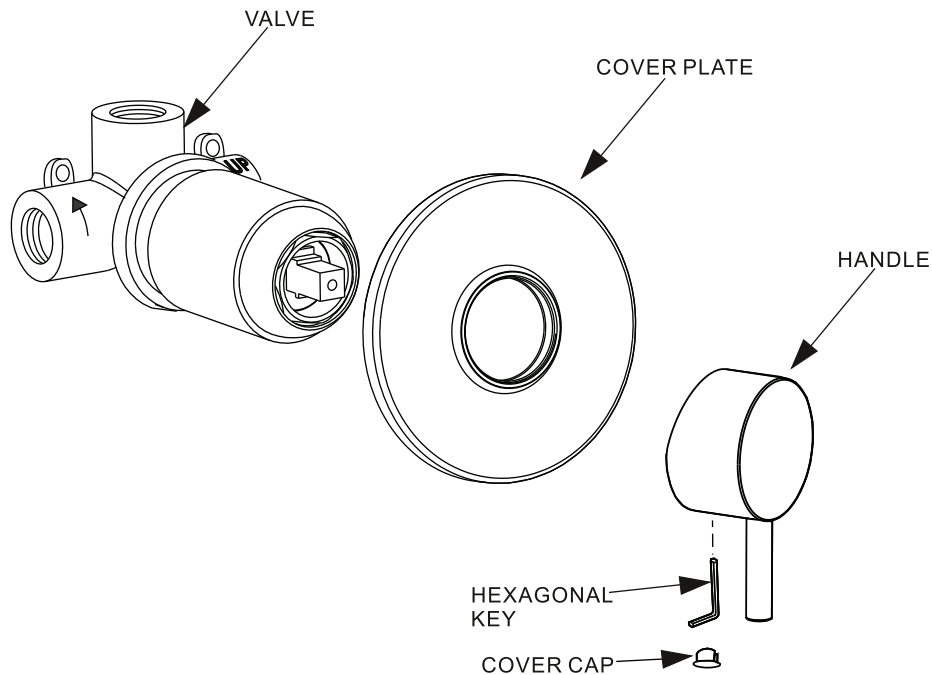


DIMENSIONS



NOTE: ALL DIMENSIONS IN MILLIMETRES

INSTALLATION





INSTALLATION

First shut off your water heating system then, with your mains stop cock closed, open the lowest hot and cold taps in the house and allow to run until the cold storage tank and pipes are empty (the hot water storage cylinder always remains full). Where combination boilers are fitted it is only necessary to turn off the boiler and shut off the incoming mains.

Fitting isolating valves to the inlet feeds is recommended for ease of maintenance.

INSTALLATION

-  **Remember to turn off the mains water supply before connecting to any existing pipe work.**
-  **Warning! Please check for any hidden pipes and cables before drilling holes in the wall**

The valve is secured in place by means of rigid (clipped) pipe work. Make sure the valve is set back from the front face of the wall by the appropriate depth to allow for plasterboard, filling and tiling etc.

Inlets and outlets are 1/2" ports. Make all pipe work connections using a proprietary thread sealer. Do not use tapered threaded adaptors.

Apply a narrow bead of clear silicone sealant around the back edge of the cover plate and carefully press into position.

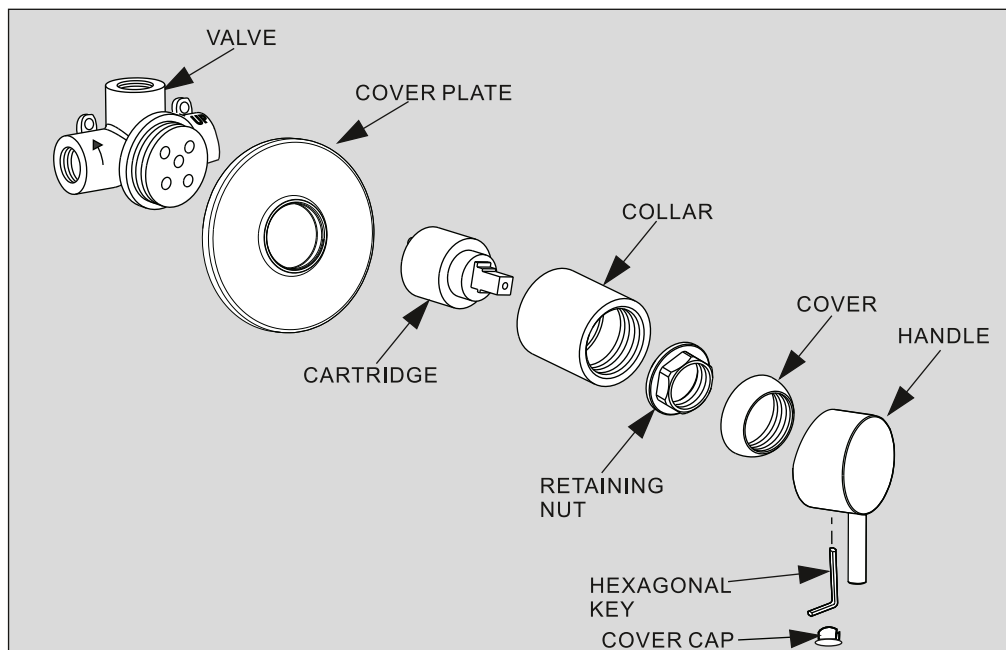
Fit the control knobs by lining up the flat surface of the valve cover with the grub screw on the handle, tighten the screw with the supplied hexagonal key.

ATTENTION

Having first checked all new connections, turn on the mains stop cock, close all taps except the new mixer and as the system starts to refill check for leaks.

Once you have satisfied yourself that there are no leaks, switch on the water.

MAINTENANCE

**CLEANING THE CARTRIDGE**

The concealed cartridge should give trouble free service, but in the event of any problems, servicing is straight forward.

To remove the cartridge.

First shut off the water supply then loosen the grub screw and remove the handle. Take off the cover plate & then the retaining nut. Taking note of the orientation of the cartridge remove it.

Wash the cartridge with clean running water, dry and lightly grease the seal.

Replace cartridge then refit retaining nut, cover and handle as above.

CLEANING

The chrome we use on our taps is very durable, nevertheless care should be taken when cleaning them. They should be cleaned only with warm soapy water followed by rinsing with clean water and drying with a soft cloth. All finishes are vulnerable to acid attack and some strong substances such as household cleaners, disinfectants, denture cleaners, hair dyes, wine making and photographic chemicals can cause the surface to go black or peel.