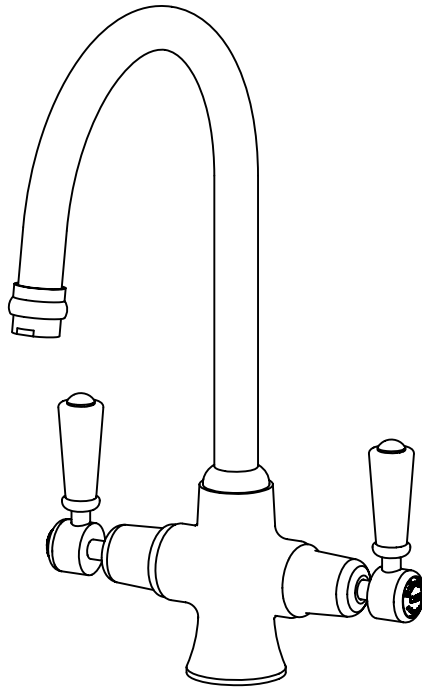


# INSTALLATION INSTRUCTIONS

## Burlington Curved spout kitchen tap chrome - 156.G.39608



### **Important**

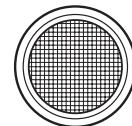
- We recommend that this product is installed by a qualified professional contractor. Such as a plumber who is certified by NVQ (National Vocational Qualification) or SNVQ (Scottish National Vocational Qualification) Level 3
- Please check this product immediately to ensure that it has not been damaged and is complete. Before installation, please make sure this product is the correct model and you have all the parts required for installation and using.
- All the taps in Burlington Range should be supplied with hot and cold water at balanced pressure. If not, then the mixing function will not work correctly. It is necessary to fit non-return valves on both hot and cold feeds pipe. These are not supplied.
- Please flush the water system to ensure that no metal swarf, solder, and other impurities can enter the taps.
- Turn off water supply before commencing work, this should be done at the isolating valves of inlet feeds if fitted or main stopcock.
- Please read these instructions carefully and keep it for future reference.

### **Working pressure**

The tap is suitable for both high and low pressure installation. To ensure that the tap works well under low water pressure, the cold water storage tank must be at least 2 meters above the installed position. The maximum static pressure is 10 bar, and operating water pressure is 5 bar. Where the operating water pressure above 5 bar, then a pressure reducing valve must be fitted.

### **Aerator**

The tap comes with a factory-fitted aerator for high pressure water systems.

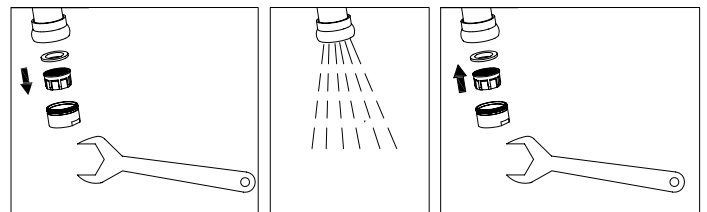


AERATOR

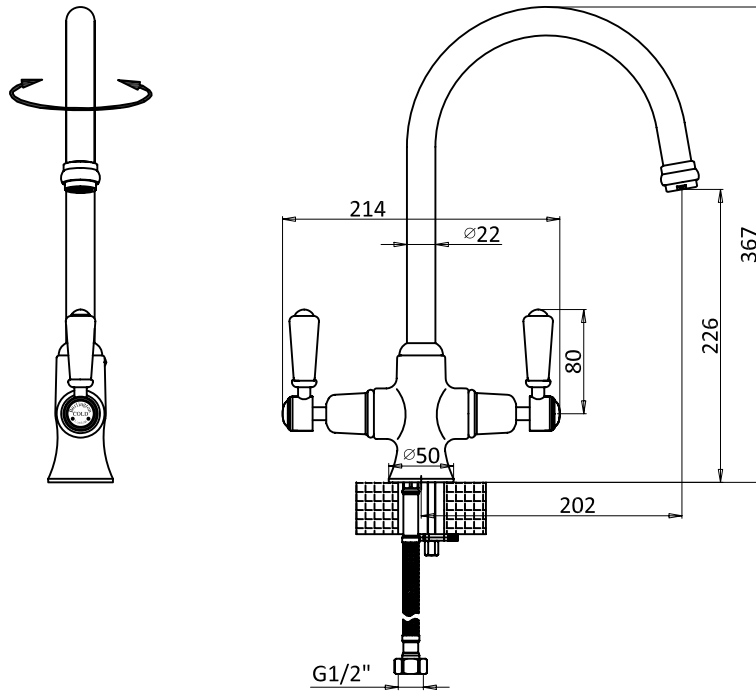
### **Cleaning**

**Before use:** Unscrew the filter and allow the water to run freely for 5 minutes. Then screw the filter back in place.

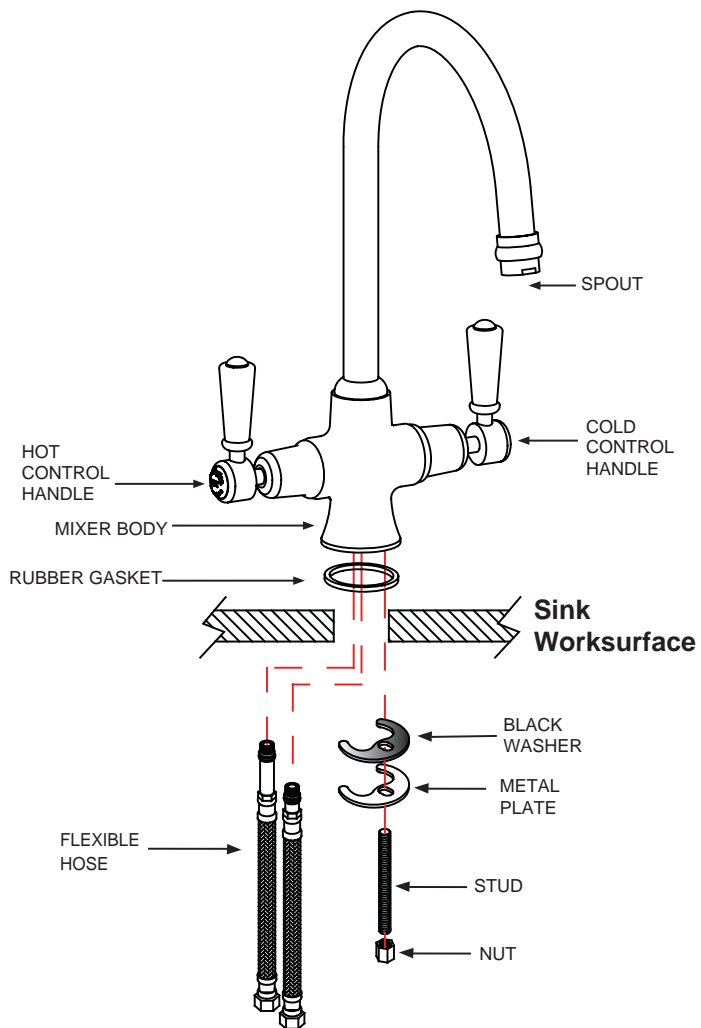
**Periodically:** Unscrew the nozzle and remove. Rinse it with cleaning running water until any loose debris is cleared. Then replace the nozzle and tighten.



## Dimension

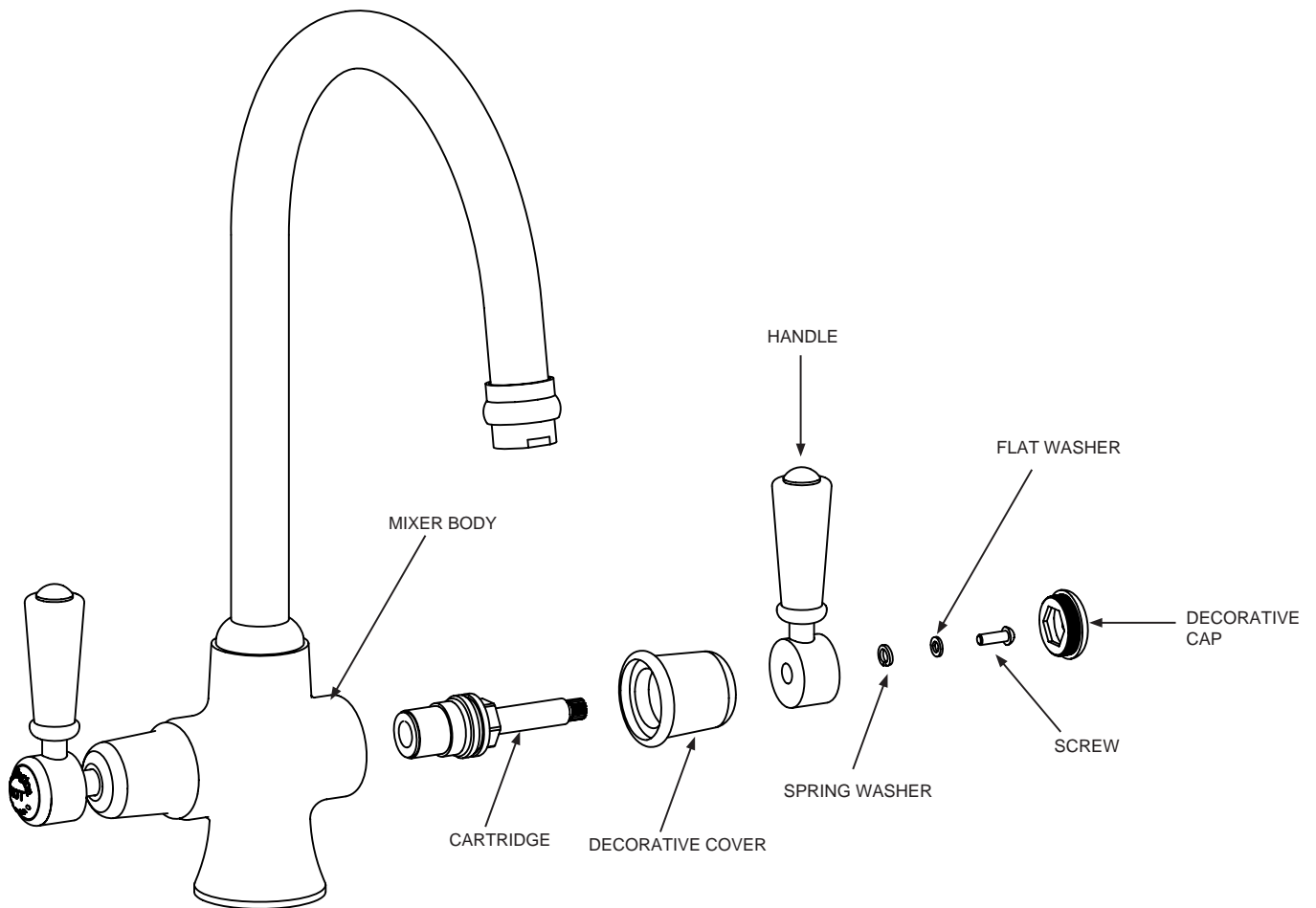


## Installation



1. Fit the rubber gasket into the groove of plate on the underside of the mixer body.
2. Screw and tighten two flexible hoses into the mixer body, and fully hand tighten.
3. Loosen the nut from stud and screw the stud into the base of mixer. Pass the flexible hoses and stud through the hole in sink, and place the mixer in position on the sink.
4. Slide the black washer and metal plate onto the stud. Then screw on the nut and tighten the mixer on sink.  
The mixer needs to be fixed firmly but do not over tighten as damage may be caused to the sink.
5. Connect the water supply pipe to the flexible hoses .

## Cleaning Cartridge



### **To Remove the Cartridge**

1. Screw off the decorative cap and then use a suitable hex key to loosen the screw.
2. Pull off the handle.
3. Screw off the decorative cover. Pull the cartridge out and wash it with clean running water. Make sure any trapped debris has been removed. Dry and lightly grease the seal (only use silicone grease).
4. Refit the cartridge followed by the decorative cover, handle, screw and decorative cap.

### **Maintenance**

We do NOT recommend you use any household cleaners to clean the product. Because these cleaners change substance or formula too frequently. The product should be always cleaned only with soapy water and rinsed with clean water and dried with a soft cloth.