

# DOUBLE DRAWER **EDGE.**

*Michel César*

EG610D2/EG610D2T

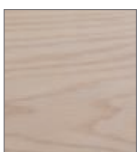
---



## Product Feature

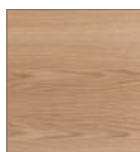
- + Paint — The paint used on our products is polyurethane or UV based. It is five times harder and more durable than lacquer finishes. Hundreds of gloss colour options available.
- + Timber finishes — Our timber finishes are available in Dark Oak, Natural Oak, White Oak, Walnut, Noce, Chestnut and Tussock. Being 100% natural products, each will have variations in grain and colour. All come stained and sealed with a protective UV finish. Gloss option is available for most veneers.

## Vanity Finishes

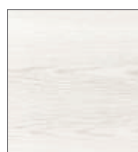


Blonde Oak

**NEW**



Natural Oak



White Oak



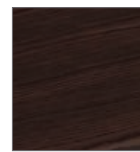
Noce



Walnut



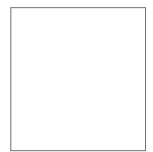
Dark Oak



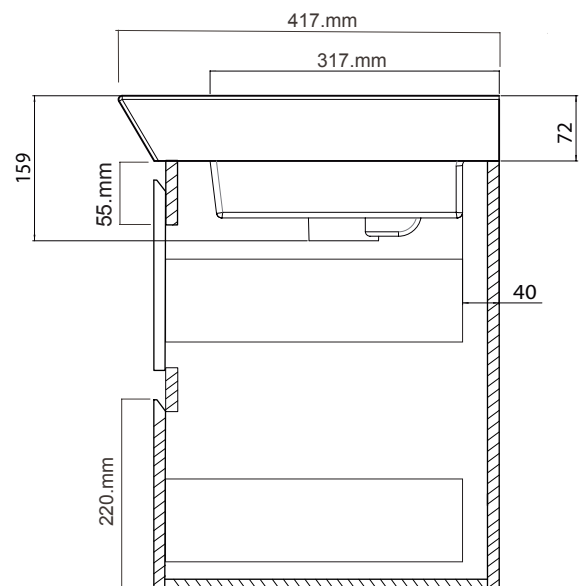
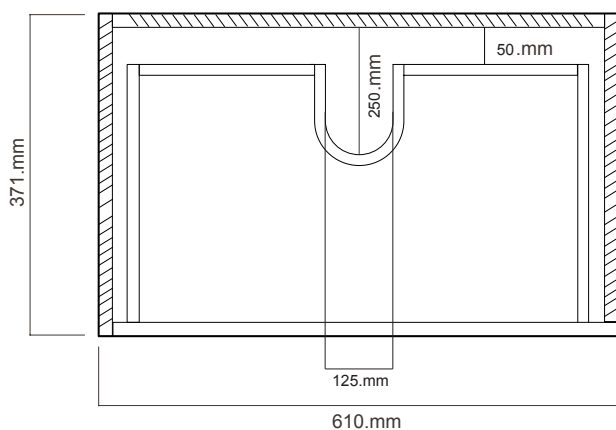
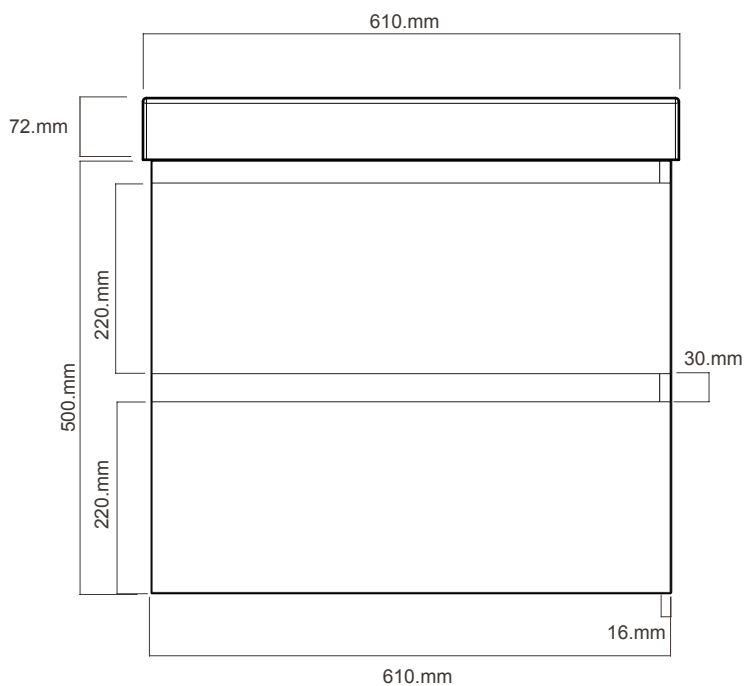
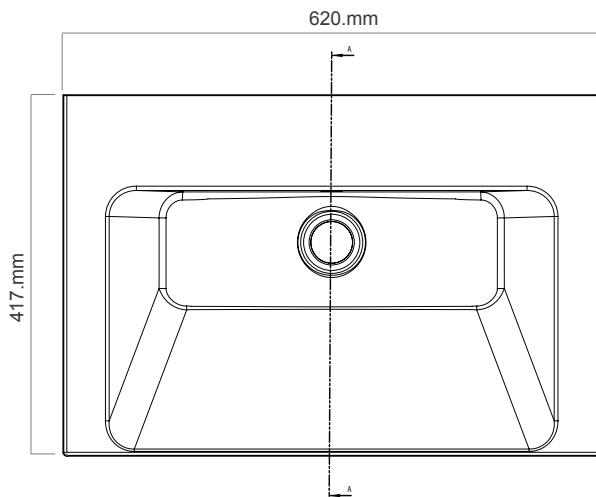
Chestnut



Tussock



White Paint  
Finish



## DOUBLE DRAWER

# EDGE.

EG610D2/EG610D2T  
2 Drawers, White/Timber

Note: Drawing indicate the technical measurement only and is not a reflection of how the unit will look.