

DOUBLE DRAWER **EDGE.**

Michel César

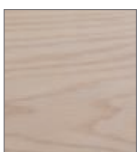
EG106D2RH/EG106D2TRH



Product Feature

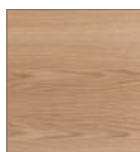
- + Paint — The paint used on our products is polyurethane or UV based. It is five times harder and more durable than lacquer finishes. Hundreds of gloss colour options available.
- + Timber finishes — Our timber finishes are available in Dark Oak, Natural Oak, White Oak, Walnut, Noce, Chestnut and Tussock. Being 100% natural products, each will have variations in grain and colour. All come stained and sealed with a protective UV finish. Gloss option is available for most veneers.

Vanity Finishes

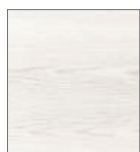


Blonde Oak

NEW



Natural Oak



White Oak



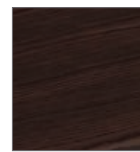
Noce



Walnut



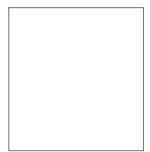
Dark Oak



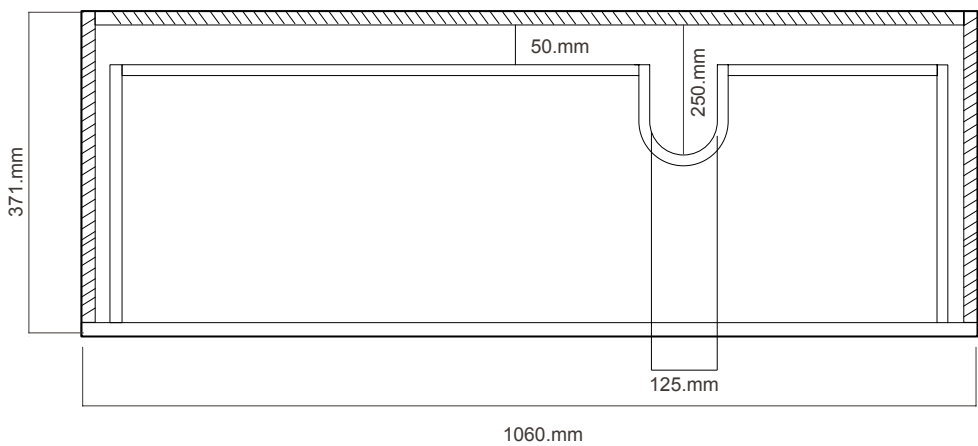
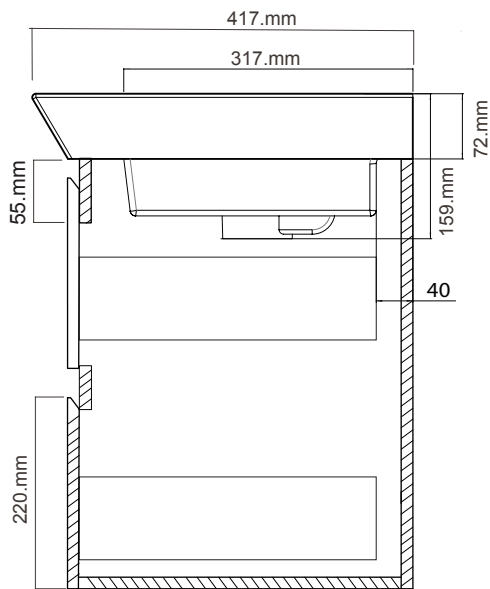
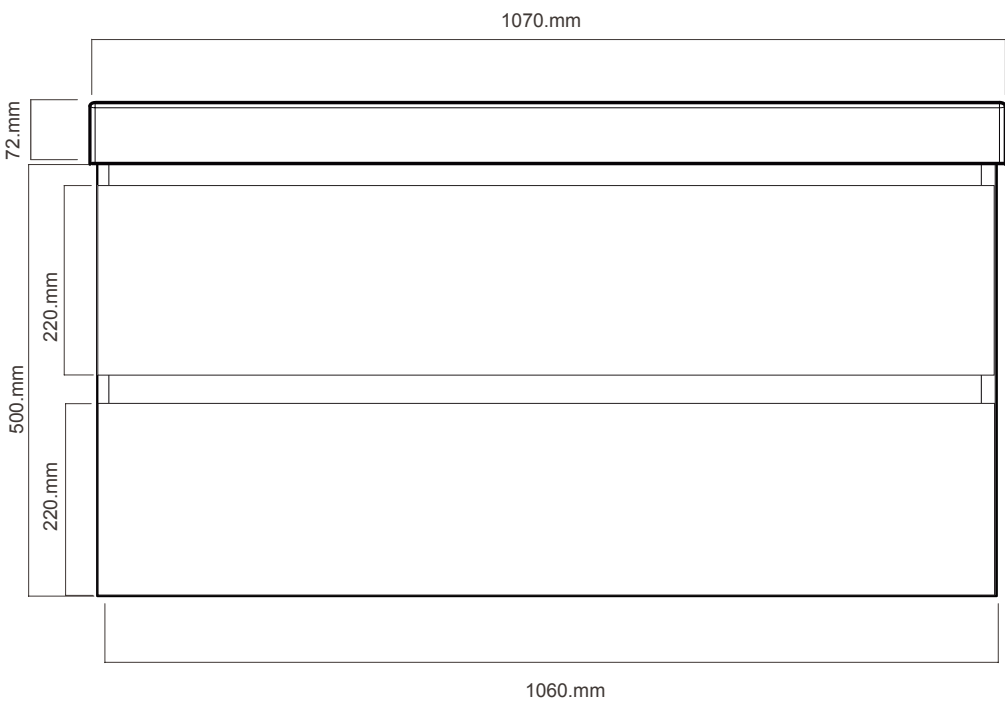
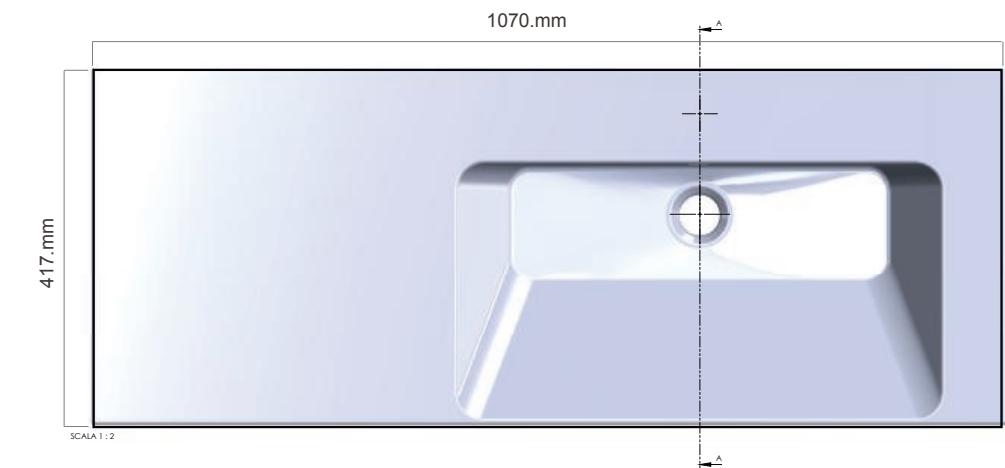
Chestnut



Tussock



White Paint
Finish



DOUBLE DRAWER

EDGE.

EG106D2RH/EG106D2TRH
2 Drawers, White/Timber

Note: Drawing indicate the technical measurement only and is not a reflection of how the unit will look.